

## Anti-TSH beta Antibody [TSHb/1317] - BSA and Azide free (A253397)

### Specifications:

Name:	Anti-TSH beta Antibody [TSHb/1317] - BSA and Azide free
Description:	Mouse monoclonal [TSHb/1317] antibody to TSH beta.
Specificity:	The four human glycoprotein hormones chorionic gonadotropin (CG), luteinizing hormone (LH) follicle stimulating hormone (FSH), and thyroid stimulating hormone (TSH) are dimers consisting of alpha and beta subunits that are associated non-covalently. The alpha subunits of these hormones are identical, however, their beta chains are unique and confer biological specificity. TSH is synthesized and secreted by thyrotrope cells in the anterior pituitary gland which regulates the endocrine function of the thyroid gland. TSH stimulates the thyroid gland to secrete the hormones thyroxine (T4) and triiodothyronine (T3). TSH production is controlled by a Thyrotropin-Releasing Hormone (TRH), which is manufactured in the hypothalamus and transported to the pituitary gland, where it increases TSH production and release. Somatostatin is also produced by the hypothalamus and has an opposite effect on the pituitary production of TSH, decreasing or inhibiting its release. TSH is a useful marker in classification of pituitary tumors and the study of pituitary disease.
Applications:	IHC-P
Recommended Dilutions:	IHC-P: 1-2 µg/ml
Reactivity:	Human
Immunogen:	Recombinant fragment of human TSH beta protein.
Host:	Mouse
Clonality:	Monoclonal
Clone ID:	TSHb/1317
Isotype:	IgG1
Light Chains:	kappa
Conjugate:	Unconjugated
Purification:	Protein A/G chromatography.
Concentration:	1 mg/ml
Product Form:	Liquid
Formulation:	Supplied in 10mM Phosphate Buffered Saline; without Sodium Azide and carrier free.
Storage:	Shipped at 4°C. Upon delivery aliquot and store at -20°C. Avoid freeze / thaw cycles.

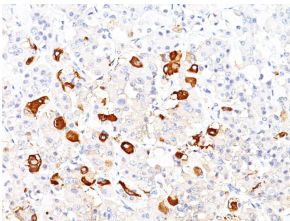
## Anti-TSH beta Antibody [TSHb/1317] - BSA and Azide free (A253397)

### Specifications continued:

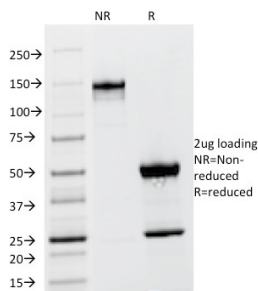
**General Notes:** This monoclonal antibody is also available in a different formulation with BSA and Sodium Azide - Anti-TSH beta Antibody [TSHb/1317] (A250217).

**Disclaimer:** This product is for research use only. It is not intended for diagnostic or therapeutic use.

### Images:



Immunohistochemical analysis of formalin-fixed, paraffin-embedded human pituitary using Anti-TSH beta Antibody [TSHb/1317].



SDS-PAGE analysis of Anti-TSH beta Antibody [TSHb/1317] under non-reduced and reduced conditions; showing intact IgG and intact heavy and light chains, respectively. SDS-PAGE analysis confirms the integrity and purity of the antibody.