

## ANTXR2 Polyclonal Antibody

<b>Catalog No.</b>	A6526	<b>Category</b>	Polyclonal Antibodies
<b>Applications</b>	WB, IHC	<b>Observed MW</b>	72kDa
<b>Cross-reactivity</b>	Human, Mouse, Rat	<b>Calculated MW</b>	34kDa/42kDa/53kDa

### Immunogen Information

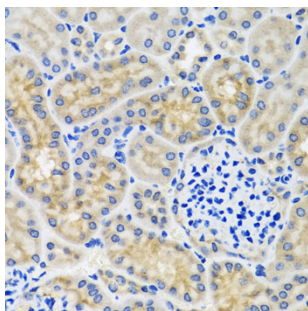
<b>Immunogen</b>	Recombinant fusion protein containing a sequence corresponding to amino acids 339-488 of human ANTXR2 (NP_477520.2).
<b>Gene ID</b>	118429
<b>Swiss prot</b>	P58335
<b>Synonyms</b>	ANTXR2; CMG-2; CMG2; HFS; ISH; JHF; anthrax toxin receptor 2

### Product information

<b>Source</b>	Rabbit
<b>Isotype</b>	IgG
<b>Purification method</b>	Affinity purification
<b>Storage</b>	Store at -20°C. Avoid freeze / thaw cycles. Buffer: PBS with 0.02% sodium azide, 50% glycerol, pH7.3.

### Background

This gene encodes a receptor for anthrax toxin. The protein binds to collagen IV and laminin, suggesting that it may be involved in extracellular matrix adhesion. Mutations in this gene cause juvenile hyaline fibromatosis and infantile systemic hyalinosis. Multiple transcript variants encoding different isoforms have been found for this gene.

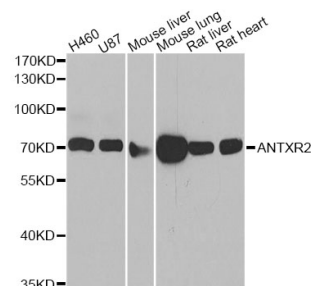


Immunohistochemistry - ANTXR2 Polyclonal Antibody (A6526)

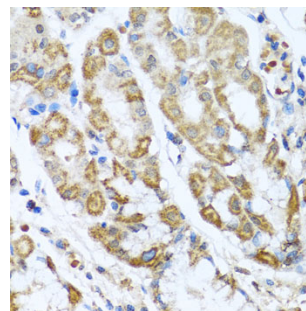
### Recommended Dilutions

WB 1:500 -  
1:2000

IHC 1:50 -  
1:200



Western blot - ANTXR2 Polyclonal Antibody (A6526)



Immunohistochemistry - ANTXR2 Polyclonal Antibody (A6526)