

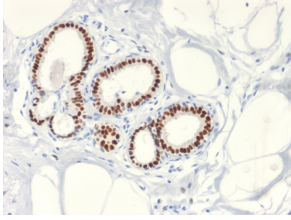
Anti-Estrogen Receptor alpha Antibody [ESR1/2299R] (A248486)

Specifications:

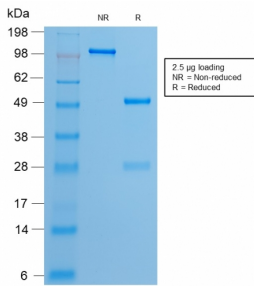
| | |
|------------------------|--|
| Name: | Anti-Estrogen Receptor alpha Antibody [ESR1/2299R] |
| Description: | Recombinant rabbit monoclonal [ESR1/2299R] antibody to Estrogen Receptor alpha. |
| Specificity: | This antibody is specific to ER alpha and shows minimal cross-reaction with other members of the family. ER is an important regulator of growth and differentiation in the mammary gland. Presence of ER in breast tumors indicates an increased likelihood of response to anti-estrogen (e.g. tamoxifen) therapy. This antibody is excellent for staining of formalin-fixed, paraffin-embedded breast carcinomas. |
| Applications: | WB, IHC-P |
| Recommended Dilutions: | WB: 1-2 µg/ml, IHC-P: 1-2 µg/ml |
| Reactivity: | Human |
| Immunogen: | Recombinant full-length human Estrogen Receptor alpha protein. |
| Host: | Rabbit |
| Clonality: | Monoclonal |
| Clone ID: | ESR1/2299R |
| Isotype: | IgG |
| Conjugate: | Unconjugated |
| Purification: | Protein A/G chromatography. |
| Concentration: | 200 µg/ml |
| Product Form: | Liquid |
| Formulation: | Supplied in 10mM Phosphate Buffered Saline with 0.05% BSA and 0.05% Sodium Azide. |
| Storage: | Shipped at 4°C. Upon delivery aliquot and store at -20°C. Avoid freeze / thaw cycles. |
| General Notes: | This monoclonal antibody is also available in a different formulation without BSA and Sodium Azide - Anti-Estrogen Receptor alpha Antibody [ESR1/2299R] - BSA and Azide free (A251668). |
| Disclaimer: | This product is for research use only. It is not intended for diagnostic or therapeutic use. |

Anti-Estrogen Receptor alpha Antibody [ESR1/2299R] (A248486)

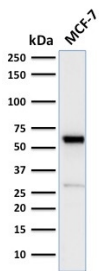
Images:



Immunohistochemical analysis of formalin-fixed, paraffin-embedded human breast carcinoma using Anti-Estrogen Receptor alpha Antibody [ESR1/2299R].



SDS-PAGE analysis of Anti-Estrogen Receptor alpha Antibody [ESR1/2299R] under non-reduced and reduced conditions; showing intact IgG and intact heavy and light chains, respectively. SDS-PAGE analysis confirms the integrity and purity of the antibody.



Western blot analysis of human MCF-7 cell lysate using Anti-Estrogen Receptor alpha Antibody [ESR1/2299R].