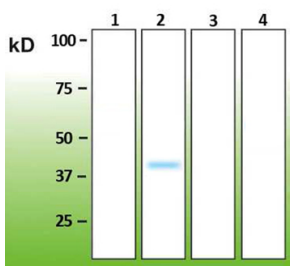


## Anti-p38 beta Antibody [E13-Q] (A8281)

### Specifications:

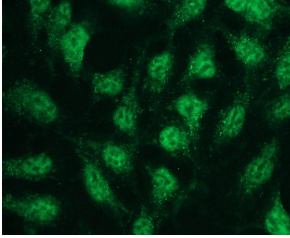
Name:	Anti-p38 beta Antibody [E13-Q]
Description:	Rabbit monoclonal (E13-Q) antibody to p38 beta.
Specificity:	This antibody recognizes the epitope located between Glu352 - Glu363.
Applications:	WB, ELISA, IP, ICC
Recommended Dilutions:	WB: 1:1,000, ELISA: 1:10,000-1:20,000.
Reactivity:	Human
Immunogen:	Peptide derived from the C-terminus of human p38 beta sequence.
Host:	Rabbit
Clonality:	Monoclonal
Clone ID:	E13-Q
Isotype:	IgG
Conjugate:	Unconjugated
Product Form:	Liquid
Formulation:	Supplied in Tris Buffered Saline, pH 8.0, with 10 mg/ml BSA and 0.05% Sodium Azide.
Storage:	Shipped at 4°C. Upon delivery aliquot and store at -20°C. Avoid freeze / thaw cycles.
Disclaimer:	This product is for research use only. It is not intended for diagnostic or therapeutic use.

### Images:



## Anti-p38 beta Antibody [E13-Q] (A8281)

Images continued:



Representative picture of p38- $\beta$  expression in HEK293 cells, visualized with Anti-p38 beta Antibody (A8281). Primary antibody dilution: 1:500.