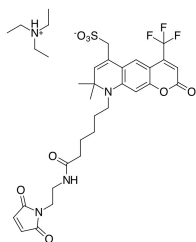


## AF430 maleimide (A270019)

### Specifications:

|                                       |  |
|---------------------------------------|--|
| Name:                                 | AF430 maleimide  |
| Description:                          | AF430 is a hydrophilic dye of coumarin nature, structurally identical to Alexa Fluor <sup>®</sup> 430. The dye is used in flow cytometry. This maleimide derivative is reactive against thiol groups. Therefore, it can be used to label many proteins, including those residing on cell surfaces. |
| Absorption Maxima:                    | 430 nm   |
| Extinction Coefficient:               | 15955 M <sup>-1</sup> cm <sup>-1</sup>   |
| Emission Maxima:                      | 542 nm   |
| Fluorescence Quantum Yield:           | 0.23   |
| CF <sub>260</sub> :                   | 0.06   |
| CF <sub>280</sub> :                   | 0.06   |
| Mass Spec M+ Shift after Conjugation: | 625.2  |
| Purity:                               | 95% (by <sup>1</sup> H NMR and HPLC-MS).   |
| Molecular Formula:                    | C <sub>34</sub> H <sub>45</sub> N <sub>4</sub> F <sub>3</sub> O <sub>8</sub> S   |
| Molecular Weight:                     | 726.8 kDa  |
| Product Form:                         | Yellow solid.  |
| Solubility:                           | Soluble in water and polar organic solvents (DMF, DMSO).   |
| Storage:                              | Shipped at room temperature. Upon delivery, store in the dark at -20°C. Avoid prolonged exposure to light. Desiccate.  |
| Disclaimer:                           | This product is for research use only. It is not intended for diagnostic or therapeutic use.   |

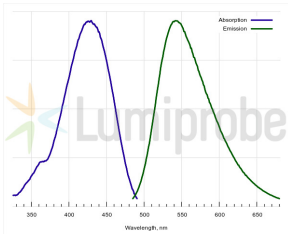
### Images:



Structure of AF430 maleimide.

## AF430 maleimide (A270019)

Images continued:



Absorption and emission spectra of AF430.