

TSHB Polyclonal Antibody

Catalog No.	A6780	Category	Polyclonal Antibodies
Applications	WB, IHC, IF	Observed MW	Refer to Figures
Cross-reactivity	Human, Mouse	Calculated MW	10kDa/15kDa

Immunogen Information

Immunogen	Recombinant fusion protein containing a sequence corresponding to amino acids 21-138 of human TSHB (NP_000540.2).
Gene ID	7252
Swiss prot	P01222
Synonyms	TSHB; TSH-B; TSH-BETA; thyrotropin subunit beta

Product information

Source	Rabbit
Isotype	IgG
Purification method	Affinity purification
Storage	Store at -20°C. Avoid freeze / thaw cycles. Buffer: PBS with 0.02% sodium azide, 50% glycerol, pH7.3.

Background

The four human glycoprotein hormones chorionic gonadotropin (CG), luteinizing hormone (LH), follicle stimulating hormone (FSH), and thyroid stimulating hormone (TSH) are dimers consisting of alpha and beta subunits that are associated noncovalently. The alpha subunits of these hormones are identical, however, their beta chains are unique and confer biological specificity. Thyroid stimulating hormone functions in the control of thyroid structure and metabolism. The protein encoded by this gene is the beta subunit of thyroid stimulating hormone. Mutations in this gene are associated with congenital central and secondary hypothyroidism and Hashimoto's thyroiditis. Alternative splicing of this gene results in multiple transcript variants.



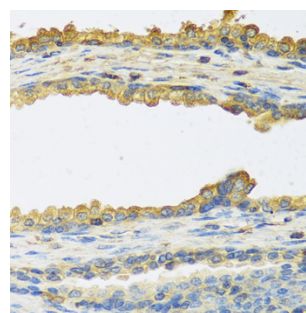
Immunofluorescence - TSHB Polyclonal Antibody (A6780)

Recommended Dilutions

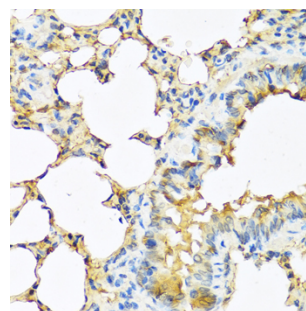
WB 1:500 -
1:2000

IHC 1:50 -
1:100

IF 1:50 -
1:100



Immunohistochemistry - TSHB Polyclonal Antibody (A6780)



Immunohistochemistry - TSHB Polyclonal Antibody (A6780)