

Human EGF ELISA Kit

Catalog No.: BEK1043

Size: 96T

Range: 4.7 pg/ml-300 pg/ml

Sensitivity < 1 pg/ml

Storage and Expiration: Store at 2-8°C for 4 months, or at -20°C for 8 months.

Application: For quantitative detection of EGF in Human serum, body fluids, tissue lysates or cell culture supernates.

Introduction

Epidermal growth factor (EGF) is a growth factor that stimulates cell growth, proliferation, and differentiation by binding to its receptor EGFR. It has a profound effect on the differentiation of specific cells in vivo and is a potent mitogenic factor for a variety of cultured cells of both ectodermal and mesodermal origin. EGF is produced in abundance by the mouse submandibular gland, and it can be found in human platelets, macrophages, urine, saliva, milk, and plasma. It is a magnesiotropic hormone crucial for total body Mg(2+) balance. Futamura et al. (2002) found that chronic treatment of rats with haloperidol had no influence on EGF levels in the brain or serum.

Principle of the Assay

This kit was based on sandwich enzyme-linked immune-sorbent assay technology. Anti-EGF polyclonal antibody was pre-coated onto 96-well plates. And the biotin conjugated anti-EGF polyclonal antibody was used as detection antibodies. The standards, test samples and biotin conjugated detection antibody were added to the wells subsequently, and wash with wash buffer. Avidin-Biotin-Peroxidase Complex was added and unbound conjugates were washed

away with wash buffer. TMB substrates were used to visualize HRP enzymatic reaction. TMB was catalyzed by HRP to produce a blue color product that changed into yellow after adding acidic stop solution. The density of yellow is proportional to the EGF amount of sample captured in plate. Read the O.D. absorbance at 450nm in a microplate reader, and then the concentration of EGF can be calculated.

Kit components

1. One 96-well plate pre-coated with anti-Human EGF antibody
2. Lyophilized Human EGF standards: 2 tubes (1 ng / tube)
3. Sample / Standard diluent buffer: 30 ml
4. Biotin conjugated anti-Human EGF antibody (Concentrated): 130 µl. Dilution: 1:100
5. Antibody diluent buffer: 12 ml
6. Avidin-Biotin-Peroxidase Complex (ABC) (Concentrated): 130 µl. Dilution: 1:100
7. ABC diluent buffer: 12 ml
8. TMB substrate: 10 ml
9. Stop solution: 10 ml
10. Wash buffer (25X): 30 ml

Note: Reconstitute standards and test samples with Kit Component 3.

Material Required But Not Provided

1. 37°C incubator
2. Microplate reader (wavelength: 450nm)
3. Precise pipette and disposable pipette tips
4. Automated plate washer
5. ELISA shaker
6. 1.5ml of Eppendorf tubes
7. Plate cover
8. Absorbent filter papers
9. Plastic or glass container with volume of above 1L

FOR RESEARCH USE ONLY, NOT FOR DIAGNOSTIC AND CLINICAL USE.

Protocol

● Preparation of sample and reagents

1. Sample

Isolate the test samples soon after collecting, then, analyze immediately (within 2 hours). Or aliquot and store at -20°C for long term. Avoid multiple freeze-thaw cycles.

✧ **Body fluids, tissue lysate and cell culture supernate:** Centrifuge to remove precipitate, analyze immediately or aliquot and store at -20°C.

✧ **Serum:** Coagulate the serum at room temperature (about 4 hours). Centrifuge at approximately 1000 × g for 15 min. Analyze the serum immediately or aliquot and store at -20°C.

Note: 1. Coagulate blood samples completely, then, centrifuge, and avoid hemolysis and particle.

2. NaN₃ can not be used as test sample preservative, since it is the inhibitor for HRP.

>> Sample Dilution Guideline

End user should estimate the concentration of the target protein in the test sample first, and select a proper dilution factor to make the diluted target protein concentration falls the optimal detection range of the kit. Dilute the sample with the provided diluent buffer, and several trials may be necessary in practice. The test sample must be well mixed with the diluent buffer.

✧ **High target protein concentration (3-30 ng/ml):** Dilution: 1:100. i.e. Add 1μl of sample into 99 μl of Sample / Standard diluent buffer (Kit Component 3).

✧ **Medium target protein concentration (0.3-3 ng/ml):** Dilution: 1:10. i.e. Add 10 μl of sample into 90 μl of Sample / Standard diluent buffer (Kit Component 3).

✧ **Low target protein concentration (4.7-300 pg/ml):** Dilution: 1:2. i.e. Add 50 μl of sample into 50 μl of Sample / Standard diluent buffer (Kit Component 3).

✧ **Very low target protein concentration (≤4.7 pg/ml):** Unnecessary to dilute, or dilute at 1:2.

2. Wash buffer

Dilute the concentrated Wash buffer 25-fold (1:25) with distilled water (i.e. add 30ml of concentrated wash buffer into 720 ml of distilled water).

3. Standard

Reconstitution of the Lyophilized Human EGF standard (Kit Component 2): standard solution should be prepared no more than 2 hours prior to the experiment. Two tubes of standard are included in each kit. Use one tube for each experiment. (**Note: Do not dilute the standard directly in the plate**)

a. 1000 pg/ml of standard solution: Add **1 ml** of Sample / Standard diluent buffer (Kit Component 3) into one Standard (Kit Component 2) tube, keep the tube at room temperature for 10 min and mix thoroughly.

b. 300 pg/ml of standard solution: Add **0.3 ml** of the above 1 ng/ml standard solution into **0.7 ml** sample diluent buffer (Kit Component 3) and mix thoroughly.

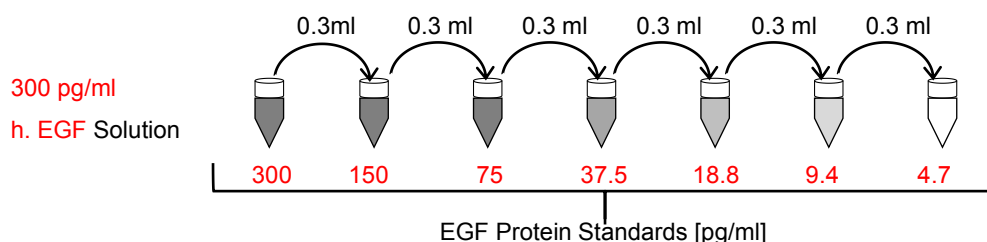
c. 150 pg/ml → 4.7 pg/ml of standard solutions: Label 6 Eppendorf tubes with 150 pg/ml, 75 pg/ml, 37.5pg/ml, 18.8 pg/ml, 9.4 pg/ml, 4.7 pg/ml, respectively. Aliquot **0.3 ml** of the Sample / Standard diluent buffer (Kit Component 3) into each tube. Add **0.3 ml** of the above 1000 pg/ml standard solution into 1st tube and mix thoroughly. Transfer **0.3 ml** from 1st tube to 2nd tube and mix thoroughly. Transfer **0.3 ml** from 2nd tube to 3rd tube and mix thoroughly, and so on.

FOR RESEARCH USE ONLY, NOT FOR DIAGNOSTIC AND CLINICAL USE.

Chongqing Biospes Co., Ltd Tel: +86-23-67567091 Fax: +86-23-67745923

Room 27-2, Building 7, No. 15, Paradise Walk, Jiangbei District, Chongqing, 400020, China

www.biospes.com



Note: The standard solutions are best used within 2 hours. The 1 ng/ml standard solution should be used within 12 hours. Or store at -20°C for up to 48 hours. Avoid repeated freeze-thaw cycles.

4. Preparation of Biotin conjugated anti-Human EGF antibody (Kit Component 4) working solution: prepare no more than 2 hours before the experiment.

- Calculate the total volume of the working solution: 0.1 ml / well × quantity of wells. (Allow 0.1-0.2 ml more than the total volume)
- Dilute the Biotin conjugated anti-Human EGF antibody (Kit Component 4) with Antibody diluent buffer (Kit Component 5) at 1:100 and mix thoroughly. i.e. Add 1 µl of Biotin conjugated anti-Human EGF antibody into 99 µl of Antibody diluent buffer.

5. Preparation of Avidin-Biotin-Peroxidase Complex (ABC) (Kit Component 6) working solution: prepare no more than 1 hour before the experiment.

- Calculate the total volume of the working solution: 0.1 ml / well × quantity of wells. (Allow 0.1-0.2 ml more than the total volume)
- Dilute the Avidin-Biotin-Peroxidase Complex (ABC) (Kit Component 6) with ABC diluent buffer (Kit Component 7) at 1:100 and mix thoroughly. i.e. Add 1 µl of Avidin-Biotin-Peroxidase Complex (ABC) into 99 µl of ABC diluent buffer.

● Assay procedure

Before adding to wells, equilibrate the ABC working solution and TMB substrate (Kit Component 8) for at least 30 min at room temperature (37°C). It is recommend to plot a standard curve for each test.

- Set standard, test sample and control (zero) wells on the pre-coated plate respectively, and then, record their positions. It is recommend to measure each standard and sample in duplicate.
- Aliquot 0.1ml of 300 pg/ml, 150 pg/ml, 75 pg/ml, 37.5pg/ml, 188 pg/ml, 9.4 pg/ml, 4.7 pg/ml standard solutions into the standard wells.
- Add 0.1 ml of Sample / Standard diluent buffer (Kit Component 3) into the control (zero) well.
- Add 0.1 ml of properly diluted sample (Human serum, body fluids, tissue lysates or cell culture supernates) into test sample wells.
- Seal the plate with a cover and incubate at 37°C for 90 min.
- Remove the cover and discard the plate content, clap the plate on the absorbent filter papers or other absorbent material. **Do NOT let the wells completely dry at any time. Do not wash plate!**
- Add 0.1 ml of Biotin conjugated anti-Human EGF antibody work solution into the above wells (standard, test sample & zero wells). Add the solution at the bottom of each well without touching the

FOR RESEARCH USE ONLY, NOT FOR DIAGNOSTIC AND CLINICAL USE.

side wall.

8. Seal the plate with a cover and incubate at 37°C for 60 min.
9. Remove the cover, and wash plate 3 times with Wash buffer (Kit Component 10) using one of the following methods:

Manual Washing: Discard the solution in the plate without touching the side walls. Clap the plate on absorbent filter papers or other absorbent material. Fill each well completely with Wash buffer (Kit Component 10) and vortex mildly on ELISA shaker for 2 min, then aspirate contents from the plate, and clap the plate on absorbent filter papers or other absorbent material. Repeat this procedure two more times for a **total of THREE washes**.

Automated Washing: Aspirate all wells, then wash plate **THREE times** with Wash buffer (Kit Component 10) (overfilling wells with the buffer). After the final wash, invert plate, and clap the plate on absorbent filter papers or other absorbent material. It is recommended that the washer be set for a soaking time of 1 min or shaking.

10. Add 0.1 ml of ABC working solution into each well, cover the plate and incubate at 37°C for 30 min.
11. Remove the cover and wash plate 5 times with Wash buffer (Kit Component 10), and each time let the wash buffer stay in the wells for 1-2 min. (See Step 9 for plate wash method).
12. Add 0.1 ml of TMB substrate (Kit Component 8) into each well, cover the plate and incubate at 37°C in dark within 30 min. (**Note:** This incubation time is for reference use only, the optimal time should be determined by end user.) And the shades of blue can be seen in the first 3-4 wells (with most concentrated Human EGF standard solutions), the other wells show no obvious color.
13. Add 0.1 ml of Stop solution (Kit Component 9) into each well and mix thoroughly. The color changes into yellow immediately.
14. Read the O.D. absorbance at 450 nm in a microplate reader within 30 min after adding the stop solution.

For calculation, (the relative O.D.₄₅₀) = (the O.D.₄₅₀ of each well) – (the O.D.₄₅₀ of Zero well). The standard curve can be plotted as the relative O.D.₄₅₀ of each standard solution (Y) vs. the respective concentration of the standard solution (X). The Human EGF concentration of the samples can be interpolated from the standard curve.

Note: If the samples measured were diluted, multiply the dilution factor to the concentrations from interpolation to obtain the concentration before dilution.

Precautions

1. Before the experiment, centrifuge each kit component for several minutes to bring down all reagents to the bottom of tubes.
2. It is recommend to measure each standard and sample in duplicate.
3. Do NOT let the plate completely dry at any time! Since the dry condition can inactivate the biological material on the plate.
4. Do not reuse pipette tips and tubes to avoid cross contamination.
5. Do not use the expired components and the components from different batches.
6. To avoid the marginal effect of plate incubation for temperature differences (the marginal wells always get stronger reaction), it is recommend to equilibrate the ABC working solution and TMB substrate for

FOR RESEARCH USE ONLY, NOT FOR DIAGNOSTIC AND CLINICAL USE.

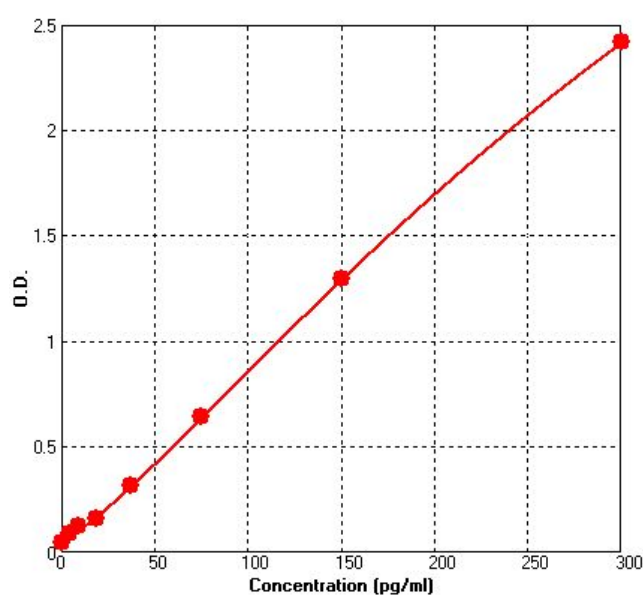
at least 30 min at room temperature (37°C) before adding to wells.

7. The TMB substrate (Kit Component 8) is colorless and transparent before use, if not, please contact us for replacement.

Typical Data & Standard Curve

Results of a typical standard run of a human EGF ELISA Kit are shown below. This standard curve was generated at our lab for demonstration purpose only. Each user should obtain their own standard curve as per experiment. (N/A=not applicable)

X	Pg/ml	0	4.7	9.4	18.8	37.5	75	150	300
Y	OD450	0.049	0.086	0.121	0.157	0.316	0.641	1.293	2.415



Reference

1. Tsutsumi, O., Kurachi, H., Oka, T. A physiological role of epidermal growth factor in male reproductive function. Science 233: 975-977, 1986.
2. Carpenter, G., Cohen, S. Epidermal growth factor. Ann. Rev. Biochem. 48: 193-216, 1979.
3. Futamura, T., Toyooka, K., Iritani, S., Niizato, K., Nakamura, R., Tsuchiya, K., Someya, T., Kakita, A., Takahashi, H., Nawa, H. Abnormal expression of epidermal growth factor and its receptor in the forebrain and serum of schizophrenic patients. Molec. Psychiat. 7: 673-682, 2002.

FOR RESEARCH USE ONLY, NOT FOR DIAGNOSTIC AND CLINICAL USE.