

CD2AP Polyclonal Antibody

Catalog No.	A7788	Category	Polyclonal Antibodies
Applications	WB	Observed MW	90kDa
Cross-reactivity	Human, Mouse, Rat	Calculated MW	71kDa

Immunogen Information

Immunogen	A synthetic peptide of human CD2AP
Gene ID	23607
Swiss prot	Q9Y5K6
Synonyms	CD2AP; CMS; CD2-associated protein

Product information

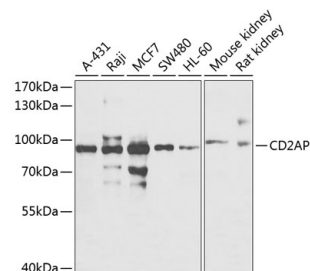
Source	Rabbit
Isotype	IgG
Purification method	Affinity purification
Storage	Store at -20°C. Avoid freeze / thaw cycles. Buffer: PBS with 0.02% sodium azide, 50% glycerol, pH7.3.

Background

This gene encodes a scaffolding molecule that regulates the actin cytoskeleton. The protein directly interacts with filamentous actin and a variety of cell membrane proteins through multiple actin binding sites, SH3 domains, and a proline-rich region containing binding sites for SH3 domains. The cytoplasmic protein localizes to membrane ruffles, lipid rafts, and the leading edges of cells. It is implicated in dynamic actin remodeling and membrane trafficking that occurs during receptor endocytosis and cytokinesis. Haploinsufficiency of this gene is implicated in susceptibility to glomerular disease.

Recommended Dilutions

WB 1:500 -
1:2000



Western blot - CD2AP Polyclonal Antibody (A7788)