

SUFU Polyclonal Antibody

Catalog No.	A6757	Category	Polyclonal Antibodies
Applications	WB, IHC, IF	Observed MW	55kDa
Cross-reactivity	Human, Mouse, Rat	Calculated MW	47kDa/52kDa/53kDa

Immunogen Information

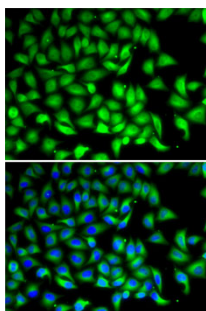
Immunogen	Recombinant fusion protein containing a sequence corresponding to amino acids 325-484 of human SUFU (NP_057253.2).
Gene ID	51684
Swiss prot	Q9UMX1
Synonyms	SUFU; PRO1280; SUFUH; SUFUXL; suppressor of fused homolog

Product information

Source	Rabbit
Isotype	IgG
Purification method	Affinity purification
Storage	Store at -20°C. Avoid freeze / thaw cycles. Buffer: PBS with 0.02% sodium azide, 50% glycerol, pH7.3.

Background

The Hedgehog signaling pathway plays an important role in early human development. The pathway is a signaling cascade that plays a role in pattern formation and cellular proliferation during development. This gene encodes a negative regulator of the hedgehog signaling pathway. Defects in this gene are a cause of medulloblastoma. Alternative splicing results in multiple transcript variants.



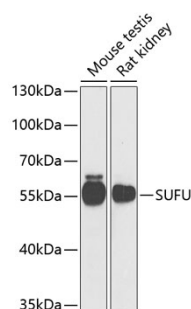
Immunofluorescence - SUFU Polyclonal Antibody (A6757)

Recommended Dilutions

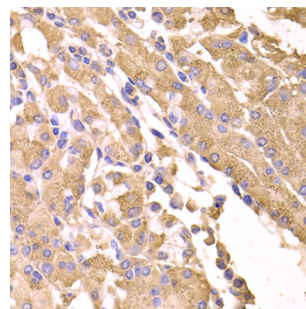
WB 1:500 -
1:2000

IHC 1:50 -
1:200

IF 1:50 -
1:200



Western blot - SUFU Polyclonal Antibody (A6757)



Immunohistochemistry - SUFU Polyclonal Antibody (A6757)