

## MYL2 Polyclonal Antibody

<b>Catalog No.</b>	A14188	<b>Category</b>	Polyclonal Antibodies
<b>Applications</b>	WB	<b>Observed MW</b>	19kDa
<b>Cross-reactivity</b>	Mouse, Rat	<b>Calculated MW</b>	18kDa

### Immunogen Information

<b>Immunogen</b>	Recombinant protein of human MYL2
<b>Gene ID</b>	4633
<b>Swiss prot</b>	P10916
<b>Synonyms</b>	MYL2; CMH10; MLC-2s/v; MLC2; myosin light chain 2

### Product information

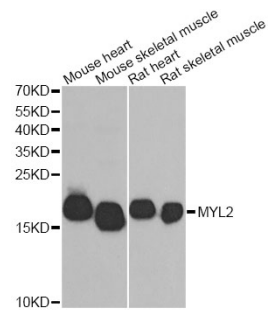
<b>Source</b>	Rabbit
<b>Isotype</b>	IgG
<b>Purification method</b>	Affinity purification
<b>Storage</b>	Store at -20°C. Avoid freeze / thaw cycles. Buffer: PBS with 0.02% sodium azide, 50% glycerol, pH7.3.

### Background

Thus gene encodes the regulatory light chain associated with cardiac myosin beta (or slow) heavy chain. Ca<sup>+</sup> triggers the phosphorylation of regulatory light chain that in turn triggers contraction. Mutations in this gene are associated with mid-left ventricular chamber type hypertrophic cardiomyopathy.

### Recommended Dilutions

WB 1:500 -  
1:2000



Western blot - MYL2 Polyclonal Antibody (A14188)