

Anti-AVPR1B Antibody (A84558)

Specifications:

| | |
|----------------|---|
| Name: | Anti-AVPR1B Antibody |
| Description: | Goat polyclonal antibody to AVPR1B. |
| Applications: | ELISA, WB, IHC |
| Reactivity: | Human |
| Immunogen: | Synthetic peptide corresponding to Human AVPR1B (C terminal). |
| Sequence: | C-PRDLELADGEGTAE |
| Host: | Goat |
| Clonality: | Polyclonal |
| Isotype: | IgG |
| Conjugate: | Unconjugated |
| Purification: | Purified from goat serum by ammonium sulphate precipitation followed by antigen affinity chromatography using the immunizing peptide. |
| Concentration: | 100 µg at 0.5 mg/ml. |
| Product Form: | Liquid |
| Formulation: | Supplied in Tris Buffered Saline, pH 7.30, with 0.02% Sodium Azide and 0.5% BSA. |
| Storage: | Shipped at 4°C. Upon delivery aliquot and store at -20°C. Avoid freeze / thaw cycles. |
| Disclaimer: | This product is for research use only. It is not intended for diagnostic or therapeutic use. |

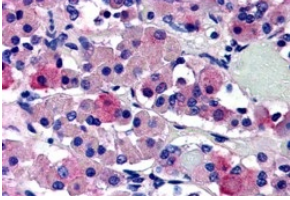
Images:



Anti-AVPR1B Antibody (A84558) (0.5µg/ml) staining of Human Amygdala lysate (35µg protein in RIPA buffer) in lane A and Anti-AVPR1B Antibody (A84559) (0.05µg/ml) staining of Rat Brain lysate (35µg protein in RIPA buffer) in lane B . Primary incubation was 1 hour. Detected by chemiluminescence.

Anti-AVPR1B Antibody (A84558)

Images continued:



Anti-AVPR1B Antibody (A84558) (5µg/ml) staining of paraffin embedded Human Anterior Pituitary Gland. Steamed antigen retrieval with citrate buffer pH 6, AP-staining.