

## COL1A1 Polyclonal Antibody

<b>Catalog No.</b>	A16891	<b>Category</b>	Polyclonal Antibodies
<b>Applications</b>	WB, IHC, IF	<b>Observed MW</b>	139kDa
<b>Cross-reactivity</b>	Human, Mouse, Rat	<b>Calculated MW</b>	138kDa

### Immunogen Information

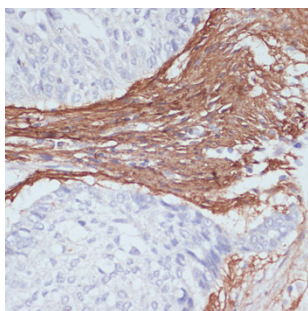
<b>Immunogen</b>	A synthetic peptide of human COL1A1.
<b>Gene ID</b>	1277
<b>Swiss prot</b>	P02452
<b>Synonyms</b>	COL1A1; EDSC; OI1; OI2; OI3; OI4; collagen alpha-1(I) chain

### Product information

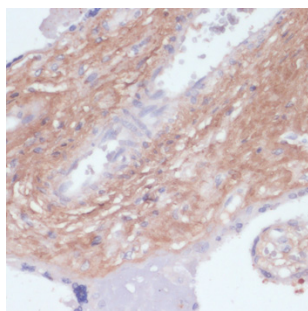
<b>Source</b>	Rabbit
<b>Isotype</b>	IgG
<b>Purification method</b>	Affinity purification
<b>Storage</b>	Store at -20°C. Avoid freeze / thaw cycles. Buffer: PBS with 0.02% sodium azide, 50% glycerol, pH7.3.

### Background

This gene encodes the pro-alpha1 chains of type I collagen whose triple helix comprises two alpha1 chains and one alpha2 chain. Type I is a fibril-forming collagen found in most connective tissues and is abundant in bone, cornea, dermis and tendon. Mutations in this gene are associated with osteogenesis imperfecta types I-IV, Ehlers-Danlos syndrome type VIIA, Ehlers-Danlos syndrome Classical type, Caffey Disease and idiopathic osteoporosis. Reciprocal translocations between chromosomes 17 and 22, where this gene and the gene for platelet-derived growth factor beta are located, are associated with a particular type of skin tumor called dermatofibrosarcoma protuberans, resulting from unregulated expression of the growth factor. Two transcripts, resulting from the use of alternate polyadenylation signals, have been identified for this gene.



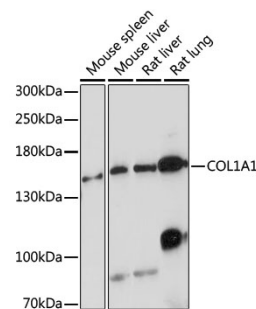
Immunohistochemistry - COL1A1 Polyclonal Antibody (A16891)



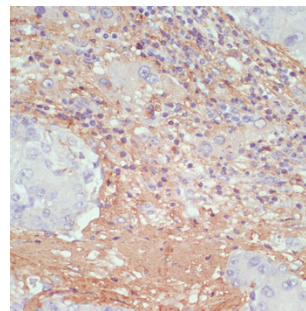
Immunohistochemistry - COL1A1 Polyclonal Antibody (A16891)

### Recommended Dilutions

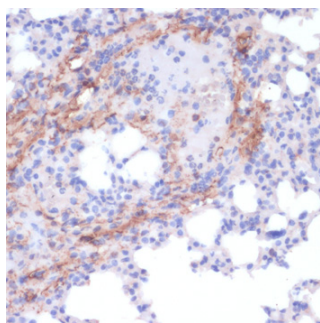
WB 1:500 -  
1:1000



Western blot - COL1A1 Polyclonal Antibody (A16891)



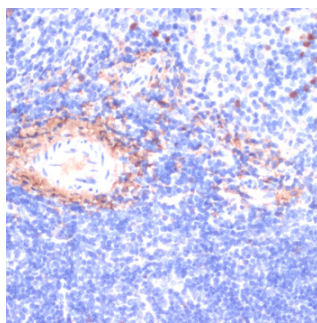
Immunohistochemistry - COL1A1 Polyclonal Antibody (A16891)



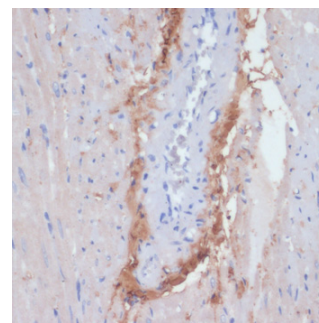
Immunohistochemistry - COL1A1  
Polyclonal Antibody (A16891)



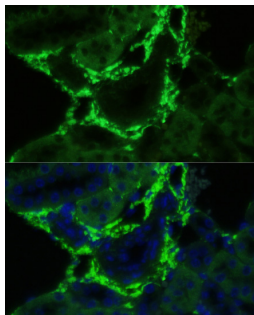
Immunohistochemistry - COL1A1  
Polyclonal Antibody (A16891)



Immunohistochemistry - COL1A1  
Polyclonal Antibody (A16891)



Immunohistochemistry - COL1A1  
Polyclonal Antibody (A16891)



Immunofluorescence - COL1A1  
Polyclonal Antibody (A16891)