

SEL1L Polyclonal Antibody

Catalog No.	A12073	Category	Polyclonal Antibodies
Applications	WB	Observed MW	102kDa
Cross-reactivity	Human, Mouse, Rat	Calculated MW	33kDa/88kDa

Immunogen Information

Immunogen	Recombinant fusion protein containing a sequence corresponding to amino acids 22-190 of human SEL1L (NP_005056.3).
Gene ID	6400
Swiss prot	Q9UBV2
Synonyms	SEL1L; PRO1063; SEL1-LIKE; SEL1L1; protein sel-1 homolog 1

Product information

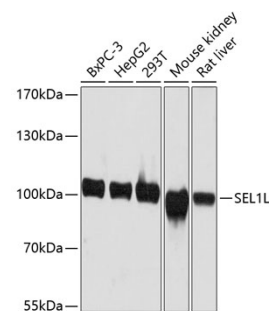
Source	Rabbit
Isotype	IgG
Purification method	Affinity purification
Storage	Store at -20°C. Avoid freeze / thaw cycles. Buffer: PBS with 0.02% sodium azide, 50% glycerol, pH7.3.

Background

The protein encoded by this gene is part of a protein complex required for the retrotranslocation or dislocation of misfolded proteins from the endoplasmic reticulum lumen to the cytosol, where they are degraded by the proteasome in a ubiquitin-dependent manner. Alternatively spliced transcript variants encoding different isoforms have been found for this gene.

Recommended Dilutions

WB 1:500 -
1:2000



Western blot - SEL1L Polyclonal Antibody (A12073)