

## AKR1B10 Polyclonal Antibody

<b>Catalog No.</b>	A7823	<b>Category</b>	Polyclonal Antibodies
<b>Applications</b>	WB	<b>Observed MW</b>	36kDa
<b>Cross-reactivity</b>	Human, Mouse, Rat	<b>Calculated MW</b>	36kDa

### Immunogen Information

<b>Immunogen</b>	Recombinant fusion protein containing a sequence corresponding to amino acids 1-316 of human AKR1B10 (NP_064695.3).
<b>Gene ID</b>	57016
<b>Swiss prot</b>	O60218
<b>Synonyms</b>	AKR1B10; AKR1B11; AKR1B12; ALDRLn; ARL-1; ARL1 ; HIS; HSI; aldo-keto reductase family 1 member B10

### Product information

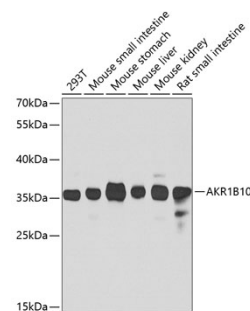
<b>Source</b>	Rabbit
<b>Isotype</b>	IgG
<b>Purification method</b>	Affinity purification
<b>Storage</b>	Store at -20°C. Avoid freeze / thaw cycles. Buffer: PBS with 0.02% sodium azide, 50% glycerol, pH7.3.

### Background

This gene encodes a member of the aldo/keto reductase superfamily, which consists of more than 40 known enzymes and proteins. This member can efficiently reduce aliphatic and aromatic aldehydes, and it is less active on hexoses. It is highly expressed in adrenal gland, small intestine, and colon, and may play an important role in liver carcinogenesis.

### Recommended Dilutions

WB 1:500 -  
1:2000



Western blot - AKR1B10 Polyclonal Antibody (A7823)