

TPH2 Polyclonal Antibody

Catalog No.	A14520	Category	Polyclonal Antibodies
Applications	WB	Observed MW	54kDa, 56kDa
Cross-reactivity	Human, Mouse, Rat	Calculated MW	56kDa

Immunogen Information

Immunogen	A synthetic peptide corresponding to a sequence within amino acids 1-100 of human TPH2 (NP_775489.2).
Gene ID	121278
Swiss prot	Q8IWU9
Synonyms	TPH2; ADHD7; NTPH; tryptophan hydroxylase 2

Product information

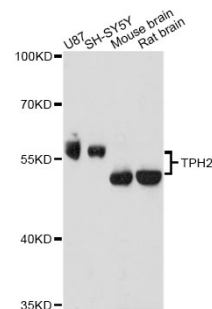
Source	Rabbit
Isotype	IgG
Purification method	Affinity purification
Storage	Store at -20°C. Avoid freeze / thaw cycles. Buffer: PBS with 0.02% sodium azide, 50% glycerol, pH7.3.

Background

This gene encodes a member of the pterin-dependent aromatic acid hydroxylase family. The encoded protein catalyzes the first and rate limiting step in the biosynthesis of serotonin, an important hormone and neurotransmitter. Mutations in this gene may be associated with psychiatric diseases such as bipolar affective disorder and major depression.

Recommended Dilutions

WB 1:500 -
1:2000



Western blot - TPH2 Polyclonal Antibody (A14520)