

EPO Polyclonal Antibody

Catalog No.	A5663	Category	Polyclonal Antibodies
Applications	WB, IHC	Observed MW	30kDa
Cross-reactivity	Human, Mouse, Rat	Calculated MW	21kDa

Immunogen Information

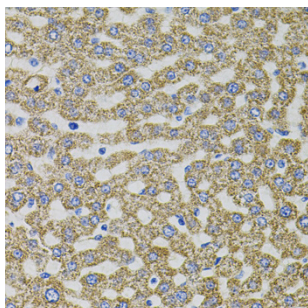
Immunogen	A synthetic peptide of human EPO
Gene ID	2056
Swiss prot	P01588
Synonyms	EPO; EP; MVCD2; erythropoietin

Product information

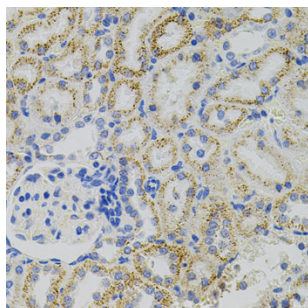
Source	Rabbit
Isotype	IgG
Purification method	Affinity purification
Storage	Store at -20°C. Avoid freeze / thaw cycles. Buffer: PBS with 0.02% sodium azide, 50% glycerol, pH7.3.

Background

This gene is a member of the EPO/TPO family and encodes a secreted, glycosylated cytokine composed of four alpha helical bundles. The protein is found in the plasma and regulates red cell production by promoting erythroid differentiation and initiating hemoglobin synthesis. This protein also has neuroprotective activity against a variety of potential brain injuries and antiapoptotic functions in several tissue types.



Immunohistochemistry - EPO Polyclonal Antibody (A5663)

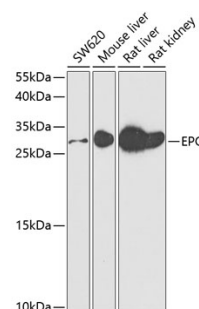


Immunohistochemistry - EPO Polyclonal Antibody (A5663)

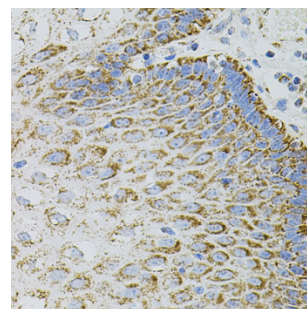
Recommended Dilutions

WB 1:500 -
1:2000

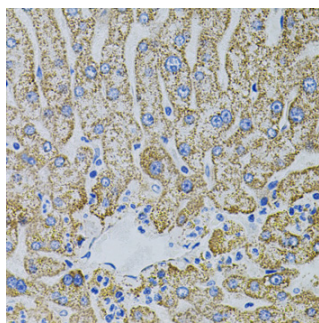
IHC 1:100 -
1:200



Western blot - EPO Polyclonal Antibody (A5663)



Immunohistochemistry - EPO Polyclonal Antibody (A5663)



Immunohistochemistry - EPO Polyclonal
Antibody (A5663)