

TET2 Polyclonal Antibody

Catalog No.	A16273	Category	Polyclonal Antibodies
Applications	WB, IHC, IF, IP	Observed MW	223kDa
Cross-reactivity	Human, Mouse	Calculated MW	130kDa/133kDa/223kDa

Immunogen Information

Immunogen	A synthetic peptide of human TET2
Gene ID	54790
Swiss prot	Q6N021
Synonyms	TET2; KIAA1546; MDS; methylcytosine dioxygenase TET2

Product information

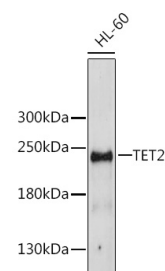
Source	Rabbit
Isotype	IgG
Purification method	Affinity purification
Storage	Store at -20°C. Avoid freeze / thaw cycles. Buffer: PBS with 0.02% sodium azide, 50% glycerol, pH7.3.

Background

The protein encoded by this gene is a methylcytosine dioxygenase that catalyzes the conversion of methylcytosine to 5-hydroxymethylcytosine. The encoded protein is involved in myelopoiesis, and defects in this gene have been associated with several myeloproliferative disorders. Two variants encoding different isoforms have been found for this gene.

Recommended Dilutions

WB 1:500 - 1:1000
IHC 1:50 - 1:200
IF 1:50 - 1:200
IP 1:50 - 1:100



Western blot - TET2 Polyclonal Antibody (A16273)