

SLC5A1 Polyclonal Antibody

Catalog No.	A3126	Category	Polyclonal Antibodies
Applications	WB, IHC	Observed MW	66kDa
Cross-reactivity	Human, Mouse, Rat	Calculated MW	60kDa/73kDa

Immunogen Information

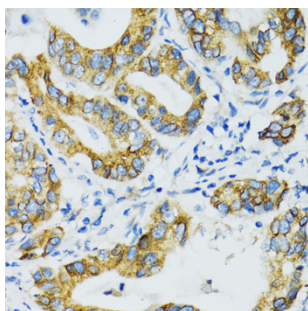
Immunogen	A synthetic peptide of human SLC5A1
Gene ID	6523
Swiss prot	P13866
Synonyms	SLC5A1; D22S675; NAGT; SGLT1; sodium/glucose cotransporter 1

Product information

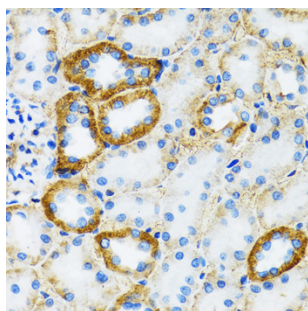
Source	Rabbit
Isotype	IgG
Purification method	Affinity purification
Storage	Store at -20°C. Avoid freeze / thaw cycles. Buffer: PBS with 0.02% sodium azide, 50% glycerol, pH7.3.

Background

This gene encodes a member of the sodium-dependent glucose transporter (SGLT) family. The encoded integral membrane protein is the primary mediator of dietary glucose and galactose uptake from the intestinal lumen. Mutations in this gene have been associated with glucose-galactose malabsorption. Multiple transcript variants encoding different isoforms have been found for this gene.



Immunohistochemistry - SLC5A1 Polyclonal Antibody (A3126)

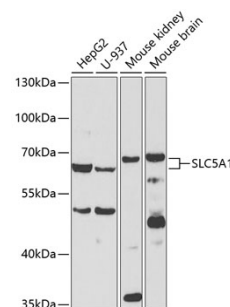


Immunohistochemistry - SLC5A1 Polyclonal Antibody (A3126)

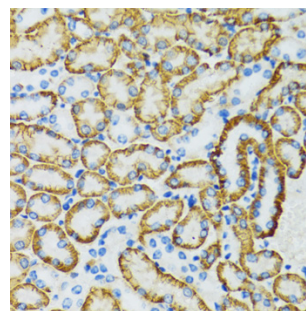
Recommended Dilutions

WB 1:500 -
1:2000

IHC 1:50 -
1:200



Western blot - SLC5A1 Polyclonal Antibody (A3126)



Immunohistochemistry - SLC5A1 Polyclonal Antibody (A3126)