

YWHAH Polyclonal Antibody

Catalog No.	A9079	Category	Polyclonal Antibodies
Applications	WB	Observed MW	28kDa
Cross-reactivity	Human, Mouse	Calculated MW	28kDa

Immunogen Information

Immunogen	Recombinant fusion protein containing a sequence corresponding to amino acids 1-246 of human YWHAH (NP_003396.1).
Gene ID	7533
Swiss prot	Q04917
Synonyms	YWHAH; YWHA1; 14-3-3 protein eta

Product information

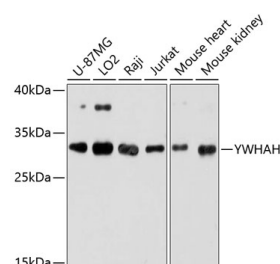
Source	Rabbit
Isotype	IgG
Purification method	Affinity purification
Storage	Store at -20°C. Avoid freeze / thaw cycles. Buffer: PBS with 0.02% sodium azide, 50% glycerol, pH7.3.

Background

This gene product belongs to the 14-3-3 family of proteins which mediate signal transduction by binding to phosphoserine-containing proteins. This highly conserved protein family is found in both plants and mammals, and this protein is 99% identical to the mouse, rat and bovine orthologs. This gene contains a 7 bp repeat sequence in its 5' UTR, and changes in the number of this repeat have been associated with early-onset schizophrenia and psychotic bipolar disorder.

Recommended Dilutions

WB 1:500 -
1:2000



Western blot - YWHAH Polyclonal Antibody (A9079)