

ENTPD2 Polyclonal Antibody

| | | | |
|-------------------------|--------|----------------------|-----------------------|
| Catalog No. | A6584 | Category | Polyclonal Antibodies |
| Applications | WB, IF | Observed MW | Refer to Figures |
| Cross-reactivity | Human | Calculated MW | 48kDa/51kDa/53kDa |

Immunogen Information

| | |
|-------------------|---|
| Immunogen | Recombinant fusion protein containing a sequence corresponding to amino acids 28-268 of human ENTPD2 (NP_982293.1). |
| Gene ID | 954 |
| Swiss prot | Q9Y5L3 |
| Synonyms | ENTPD2; CD39L1; NTPDase-2; ectonucleoside triphosphate diphosphohydrolase 2 |

Product information

| | |
|----------------------------|--|
| Source | Rabbit |
| Isotype | IgG |
| Purification method | Affinity purification |
| Storage | Store at -20°C. Avoid freeze / thaw cycles. Buffer: PBS with 0.02% sodium azide, 50% glycerol, pH7.3. |

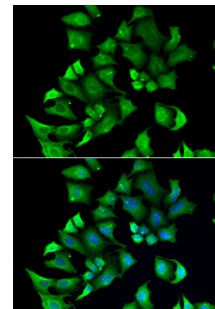
Background

The protein encoded by this gene is the type 2 enzyme of the ecto-nucleoside triphosphate diphosphohydrolase family (E-NTPDase). E-NTPDases are a family of ecto-nucleosidases that hydrolyze 5'-triphosphates. This ecto-ATPase is an integral membrane protein. Alternative splicing of this gene results in multiple transcript variants.

Recommended Dilutions

WB 1:500 -
1:2000

IF 1:50 -
1:100



Immunofluorescence - ENTPD2 Polyclonal Antibody (A6584)