

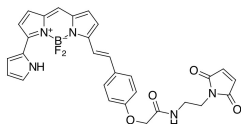
## BDP 650/665 maleimide (A270087)

### Specifications:

Name:	BDP 650/665 maleimide
Description:	BDP 650/665 is a bright, red emitting fluorophore for Cyanine 5 (Cy5) channel. The dye has a high molar extinction coefficient, and a good emission quantum yield. The dye is moderately hydrophobic, but can be used to label biomolecules in aqueous environment, so it is a good alternative to Cy5. Maleimide is a thiol reactive group. The compound can be used for the labeling of cysteine residues of proteins and peptides, among other SH-containing molecules.
Absorption Maxima:	649 nm
Extinction Coefficient:	94000 M <sup>-1</sup> cm <sup>-1</sup>
Emission Maxima:	667 nm
CF <sub>260</sub> :	0.04
CF <sub>280</sub> :	0.04
Mass Spec M+ Shift after Conjugation:	555.2
Purity:	95% (by <sup>1</sup> H NMR and HPLC-MS).
Molecular Formula:	C <sub>29</sub> H <sub>24</sub> N <sub>5</sub> BF <sub>2</sub> O <sub>4</sub>
Molecular Weight:	555.34 kDa
Product Form:	Dark colored solid.
Solubility:	Good in DMF and DMSO. Low in water.
Storage:	Shipped at room temperature. Upon delivery, store in the dark at -20°C. Avoid prolonged exposure to light. Desiccate.
Disclaimer:	This product is for research use only. It is not intended for diagnostic or therapeutic use.

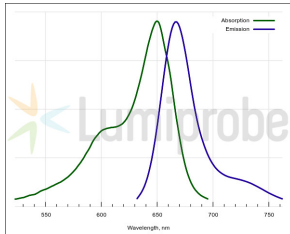
### Images:

Structure of BDP 650/665 maleimide.



## BDP 650/665 maleimide (A270087)

Images continued:



Absorption and emission spectra of BDP 650/665.