

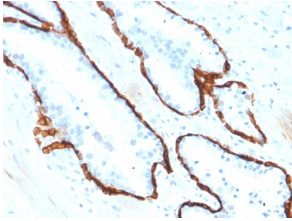
## Anti-Cytokeratin 15 Antibody [KRT15/2554] - BSA and Azide free (A252359)

### Specifications:

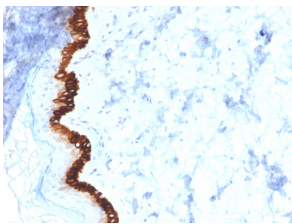
Name:	Anti-Cytokeratin 15 Antibody [KRT15/2554] - BSA and Azide free
Description:	Mouse monoclonal [KRT15/2554] antibody to Cytokeratin 15.
Applications:	Flow Cytometry, IHC-P
Recommended Dilutions:	Flow Cytometry: 1-2 µg/million cells, IHC-P: 1-2 µg/ml
Reactivity:	Human
Immunogen:	Recombinant full-length human KRT15 protein.
Host:	Mouse
Clonality:	Monoclonal
Clone ID:	KRT15/2554
Isotype:	IgG2b
Light Chains:	kappa
Conjugate:	Unconjugated
Purification:	Protein A/G chromatography.
Concentration:	1 mg/ml
Product Form:	Liquid
Formulation:	Supplied in 10mM Phosphate Buffered Saline; without Sodium Azide and carrier free.
Storage:	Shipped at 4°C. Upon delivery aliquot and store at -20°C. Avoid freeze / thaw cycles.
General Notes:	This monoclonal antibody is also available in a different formulation with BSA and Sodium Azide - Anti-Cytokeratin 15 Antibody [KRT15/2554] (A249179).
Disclaimer:	This product is for research use only. It is not intended for diagnostic or therapeutic use.

# Anti-Cytokeratin 15 Antibody [KRT15/2554] - BSA and Azide free (A252359)

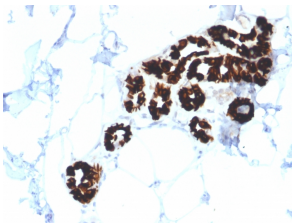
Images:



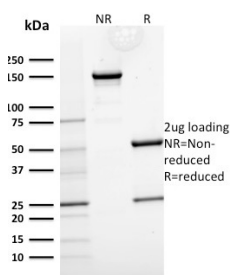
Immunohistochemical analysis of formalin-fixed, paraffin-embedded human prostate carcinoma using Anti-Cytokeratin 15 Antibody [KRT15/2554].



Immunohistochemical analysis of formalin-fixed, paraffin-embedded human basal cell carcinoma using Anti-Cytokeratin 15 Antibody [KRT15/2554].



Immunohistochemical analysis of formalin-fixed, paraffin-embedded human basal cell carcinoma using Anti-Cytokeratin 15 Antibody [KRT15/2554].



SDS-PAGE analysis of Anti-Cytokeratin 15 Antibody [KRT15/2554] under non-reduced and reduced conditions; showing intact IgG and intact heavy and light chains, respectively. SDS-PAGE analysis confirms the integrity and purity of the antibody.