

## CFD Polyclonal Antibody

<b>Catalog No.</b>	A8117	<b>Category</b>	Polyclonal Antibodies
<b>Applications</b>	WB, IHC	<b>Observed MW</b>	27kDa
<b>Cross-reactivity</b>	Human, Mouse	<b>Calculated MW</b>	27kDa

### Immunogen Information

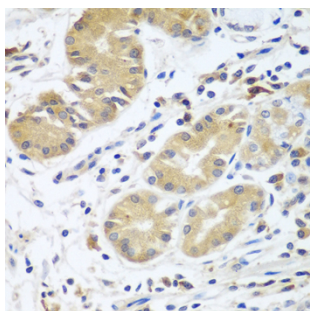
<b>Immunogen</b>	Recombinant fusion protein containing a sequence corresponding to amino acids 26-253 of human CFD (NP_001919.2).
<b>Gene ID</b>	1675
<b>Swiss prot</b>	P00746
<b>Synonyms</b>	CFD; ADIPSIN; ADN; DF; PFD; complement factor D

### Product information

<b>Source</b>	Rabbit
<b>Isotype</b>	IgG
<b>Purification method</b>	Affinity purification
<b>Storage</b>	Store at -20°C. Avoid freeze / thaw cycles. Buffer: PBS with 0.02% sodium azide, 50% glycerol, pH7.3.

### Background

This gene encodes a member of the S1, or chymotrypsin, family of serine peptidases. This protease catalyzes the cleavage of factor B, the rate-limiting step of the alternative pathway of complement activation. This protein also functions as an adipokine, a cell signaling protein secreted by adipocytes, which regulates insulin secretion in mice. Mutations in this gene underlie complement factor D deficiency, which is associated with recurrent bacterial meningitis infections in human patients. Alternative splicing of this gene results in multiple transcript variants. At least one of these variants encodes a preproprotein that is proteolytically processed to generate the mature protease.

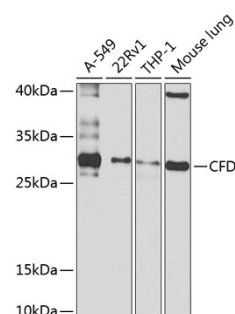


Immunohistochemistry - CFD Polyclonal Antibody (A8117)

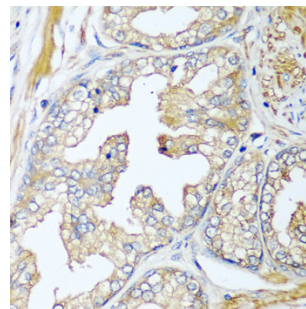
### Recommended Dilutions

WB 1:500 -  
1:2000

IHC 1:50 -  
1:100



Western blot - CFD Polyclonal Antibody (A8117)



Immunohistochemistry - CFD Polyclonal Antibody (A8117)