

## POMT1 Polyclonal Antibody

<b>Catalog No.</b>	A10281	<b>Category</b>	Polyclonal Antibodies
<b>Applications</b>	WB	<b>Observed MW</b>	63kDa
<b>Cross-reactivity</b>	Human, Mouse	<b>Calculated MW</b>	69kDa/76kDa/82kDa/84kDa

### Immunogen Information

<b>Immunogen</b>	Recombinant fusion protein containing a sequence corresponding to amino acids 310-550 of human POMT1 (NP_001070833.1).
<b>Gene ID</b>	10585
<b>Swiss prot</b>	Q9Y6A1
<b>Synonyms</b>	POMT1; LGMD2K; MDDGA1; MDDGB1; MDDGC1; RT; protein O-mannosyltransferase 1

### Product information

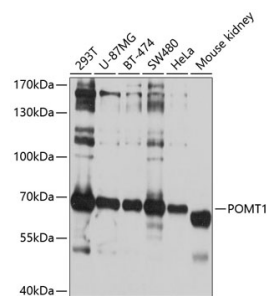
<b>Source</b>	Rabbit
<b>Isotype</b>	IgG
<b>Purification method</b>	Affinity purification
<b>Storage</b>	Store at -20°C. Avoid freeze / thaw cycles. Buffer: PBS with 0.02% sodium azide, 50% glycerol, pH7.3.

### Background

The protein encoded by this gene is an O-mannosyltransferase that requires interaction with the product of the POMT2 gene for enzymatic function. The encoded protein is found in the membrane of the endoplasmic reticulum. Defects in this gene are a cause of Walker-Warburg syndrome (WWS) and limb-girdle muscular dystrophy type 2K (LGMD2K). Several transcript variants encoding different isoforms have been found for this gene.

### Recommended Dilutions

WB 1:1000 -  
1:2000



Western blot - POMT1 Polyclonal Antibody (A10281)