

CADM2 Polyclonal Antibody

Catalog No.	A11724	Category	Polyclonal Antibodies
Applications	WB	Observed MW	52kDa
Cross-reactivity	Mouse	Calculated MW	31kDa/35kDa/44kDa/47kDa

Immunogen Information

Immunogen	Recombinant fusion protein containing a sequence corresponding to amino acids 220-335 of human CADM2 (NP_001161147.1).
Gene ID	253559
Swiss prot	Q8N3J6
Synonyms	CADM2; IGSF4D; NECL3; Necl-3; SynCAM 2; synCAM 2; SynCAM2; cell adhesion molecule 2

Product information

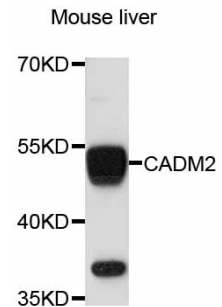
Source	Rabbit
Isotype	IgG
Purification method	Affinity purification
Storage	Store at -20°C. Avoid freeze / thaw cycles. Buffer: PBS with 0.02% sodium azide, 50% glycerol, pH7.3.

Background

This gene encodes a member of the synaptic cell adhesion molecule 1 (SynCAM) family which belongs to the immunoglobulin (Ig) superfamily. The encoded protein has three Ig-like domains and a cytosolic protein 4.1 binding site near the C-terminus. Proteins belonging to the protein 4.1 family crosslink spectrin and interact with other cytoskeletal proteins. Multiple transcript variants encoding different isoforms have been found for this gene.

Recommended Dilutions

WB 1:500 -
1:2000



Western blot - CADM2 Polyclonal Antibody (A11724)