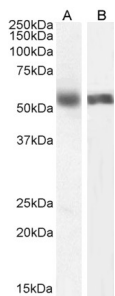


## Anti-Cytochrome P450 1A2 Antibody (A82506)

### Specifications:

Name:	Anti-Cytochrome P450 1A2 Antibody
Description:	Goat polyclonal antibody to Cytochrome P450 1A2.
Applications:	ELISA, WB
Reactivity:	Human, Mouse
Immunogen:	Synthetic peptide corresponding to Mouse Cyp1a2 (internal region).
Sequence:	C-HSENYKDNGGLIPEEK
Host:	Goat
Clonality:	Polyclonal
Isotype:	IgG
Conjugate:	Unconjugated
Purification:	Purified from goat serum by ammonium sulphate precipitation followed by antigen affinity chromatography using the immunizing peptide.
Concentration:	100 µg at 0.5 mg/ml.
Product Form:	Liquid
Formulation:	Supplied in Tris Buffered Saline, pH 7.30, with 0.02% Sodium Azide and 0.5% BSA.
Storage:	Shipped at 4°C. Upon delivery aliquot and store at -20°C. Avoid freeze / thaw cycles.
Disclaimer:	This product is for research use only. It is not intended for diagnostic or therapeutic use.

### Images:



Anti-Cyp1a2 Antibody (A82506) (0.5µg/ml) staining of Human Liver (A) and (1µg/ml) Lung (B) lysate (35µg protein in RIPA buffer). Primary incubation was 1 hour. Detected by chemiluminescence.

## Anti-Cytochrome P450 1A2 Antibody (A82506)

Images continued:

250kDa  
150kDa  
100kDa  
75kDa  
50kDa  
37kDa  
25kDa  
20kDa

Anti-Cyp1a2 Antibody (A82506) (1 $\mu$ g/ml) staining of fetal Mouse Liver lysate (35 $\mu$ g protein in RIPA buffer). Primary incubation was 1 hour. Detected by chemiluminescence.