

## TTC1 Polyclonal Antibody

<b>Catalog No.</b>	A8745	<b>Category</b>	Polyclonal Antibodies
<b>Applications</b>	WB	<b>Observed MW</b>	37kDa
<b>Cross-reactivity</b>	Human	<b>Calculated MW</b>	33kDa

### Immunogen Information

<b>Immunogen</b>	Recombinant fusion protein containing a sequence corresponding to amino acids 1-292 of human TTC1 (NP_003305.1).
<b>Gene ID</b>	7265
<b>Swiss prot</b>	Q99614
<b>Synonyms</b>	TTC1; TPR1; tetratricopeptide repeat domain 1

### Product information

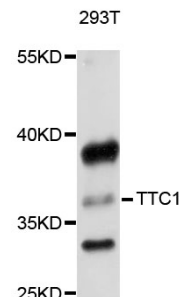
<b>Source</b>	Rabbit
<b>Isotype</b>	IgG
<b>Purification method</b>	Affinity purification
<b>Storage</b>	Store at -20°C. Avoid freeze / thaw cycles. Buffer: PBS with 0.02% sodium azide, 50% glycerol, pH7.3.

### Background

This gene encodes a protein that belongs to the tetratricopeptide repeat superfamily of proteins. The encoded protein plays a role in protein-protein interactions, and binds to the Galpha subunit of G protein-coupled receptors to activate the Ras signaling pathway. Alternate splicing results in multiple transcript variants.

### Recommended Dilutions

WB 1:500 -  
1:2000



Western blot - TTC1 Polyclonal Antibody (A8745)