

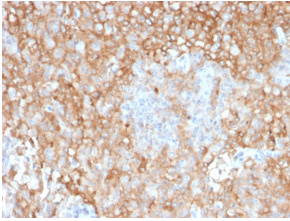
Anti-HLA DR Antibody [TAL 1B5] (A248850)

Specifications:

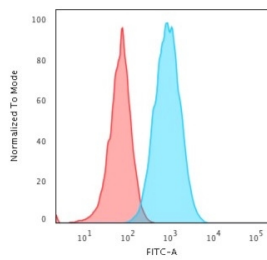
Name:	Anti-HLA DR Antibody [TAL 1B5]
Description:	Mouse monoclonal [TAL 1B5] antibody to HLA DR.
Applications:	Flow Cytometry, WB, IHC-P
Recommended Dilutions:	Flow Cytometry: 1-2 µg/million cells, WB: 1-2 µg/ml, IHC-P: 1-2 µg/ml
Reactivity:	Human
Immunogen:	Bristol 8 separated alpha chain preparation.
Host:	Mouse
Clonality:	Monoclonal
Clone ID:	TAL 1B5
Isotype:	IgG1
Light Chains:	kappa
Conjugate:	Unconjugated
Purification:	Protein A/G chromatography.
Concentration:	200 µg/ml
Product Form:	Liquid
Formulation:	Supplied in 10mM Phosphate Buffered Saline with 0.05% BSA and 0.05% Sodium Azide.
Storage:	Shipped at 4°C. Upon delivery aliquot and store at -20°C. Avoid freeze / thaw cycles.
General Notes:	This monoclonal antibody is also available in a different formulation without BSA and Sodium Azide - Anti-HLA DR Antibody [TAL 1B5] - BSA and Azide free (A252030).
Disclaimer:	This product is for research use only. It is not intended for diagnostic or therapeutic use.

Anti-HLA DR Antibody [TAL 1B5] (A248850)

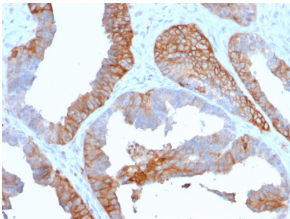
Images:



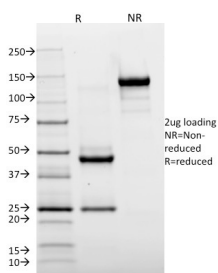
Immunohistochemical analysis of formalin-fixed, paraffin-embedded human lung tumor using Anti-HLA DR Antibody [TAL 1B5].



Flow cytometric analysis of Raji cells using Anti-HLA DR Antibody [TAL 1B5] followed by Goat Anti-Mouse IgG (CF® 488) (Blue). Isotype Control (Red).



Immunohistochemical analysis of formalin-fixed, paraffin-embedded human prostate carcinoma using Anti-HLA DR Antibody [TAL 1B5].



SDS-PAGE analysis of Anti-HLA DR Antibody [TAL 1B5] under non-reduced and reduced conditions; showing intact IgG and intact heavy and light chains, respectively. SDS-PAGE analysis confirms the integrity and purity of the antibody.