

SSB Polyclonal Antibody

Catalog No.	A0630	Category	Polyclonal Antibodies
Applications	WB, IHC, IF	Observed MW	47kDa
Cross-reactivity	Human	Calculated MW	46kDa

Immunogen Information

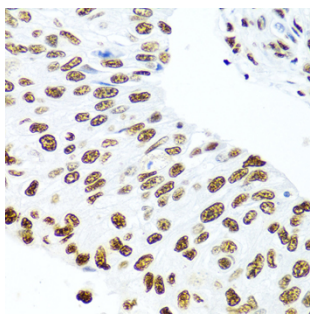
Immunogen	Recombinant fusion protein containing a sequence corresponding to amino acids 166-408 of human SSB (NP_003133.1).
Gene ID	6741
Swiss prot	P05455
Synonyms	SSB; LARP3; La; La/SSB; lupus La protein

Product information

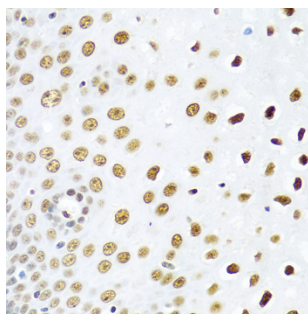
Source	Rabbit
Isotype	IgG
Purification method	Affinity purification
Storage	Store at -20°C. Avoid freeze / thaw cycles. Buffer: PBS with 0.02% sodium azide, 50% glycerol, pH7.3.

Background

The protein encoded by this gene is involved in diverse aspects of RNA metabolism, including binding and protecting poly(U) termini of nascent RNA polymerase III transcripts from exonuclease digestion, processing 5' and 3' ends of pre-tRNA precursors, acting as an RNA chaperone, and binding viral RNAs associated with hepatitis C virus. Autoantibodies reacting with this protein are found in the sera of patients with Sjogren syndrome and systemic lupus erythematosus. Alternative promoter usage results in two different transcript variants which encode the same protein.



Immunohistochemistry - SSB Polyclonal Antibody (A0630)



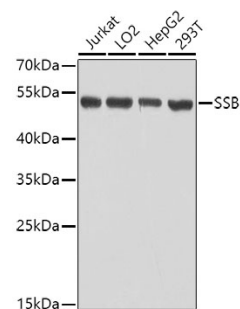
Immunohistochemistry - SSB Polyclonal Antibody (A0630)

Recommended Dilutions

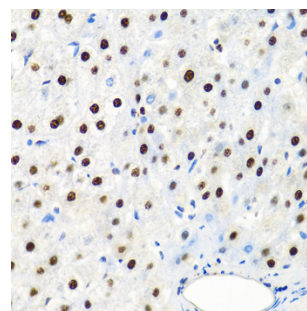
WB 1:500 -
1:1000

IHC 1:50 -
1:200

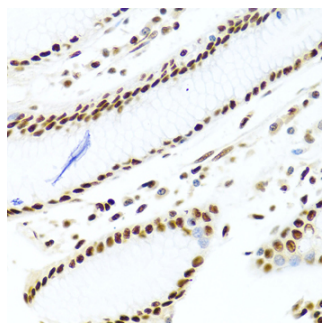
IF 1:50 -
1:200



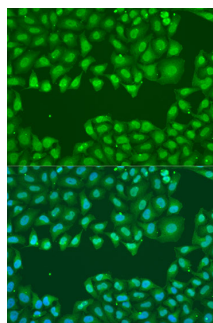
Western blot - SSB Polyclonal Antibody (A0630)



Immunohistochemistry - SSB Polyclonal Antibody (A0630)



Immunohistochemistry - SSB Polyclonal Antibody (A0630)



Immunofluorescence - SSB Polyclonal Antibody (A0630)