

SLC6A5 Polyclonal Antibody

Catalog No.	A11647	Category	Polyclonal Antibodies
Applications	WB	Observed MW	60kDa
Cross-reactivity	Human, Mouse, Rat	Calculated MW	87kDa

Immunogen Information

Immunogen	Recombinant fusion protein containing a sequence corresponding to amino acids 1-200 of human SLC6A5 (NP_004202.3).
Gene ID	9152
Swiss prot	Q9Y345
Synonyms	SLC6A5; GLYT-2; GLYT2; HKPX3; NET1; solute carrier family 6 member 5

Product information

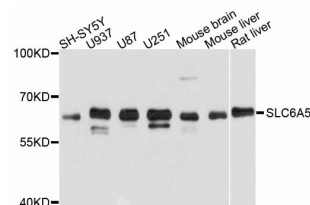
Source	Rabbit
Isotype	IgG
Purification method	Affinity purification
Storage	Store at -20°C. Avoid freeze / thaw cycles. Buffer: PBS with 0.02% sodium azide, 50% glycerol, pH7.3.

Background

This gene encodes a sodium- and chloride-dependent glycine neurotransmitter transporter. This integral membrane glycoprotein is responsible for the clearance of extracellular glycine during glycine-mediated neurotransmission. This protein is found in glycinergic axons and maintains a high presynaptic pool of neurotransmitter at glycinergic synapses. Mutations in this gene cause hyperekplexia; a heterogeneous neurological disorder characterized by exaggerated startle responses and neonatal apnea. Two transcript variants encoding different isoforms have been found for this gene.

Recommended Dilutions

WB 1:500 -
1:2000



Western blot - SLC6A5 Polyclonal Antibody (A11647)