

## ABCB10 Polyclonal Antibody

<b>Catalog No.</b>	A13787	<b>Category</b>	Polyclonal Antibodies
<b>Applications</b>	WB, IF	<b>Observed MW</b>	80kDa
<b>Cross-reactivity</b>	Human, Mouse, Rat	<b>Calculated MW</b>	79kDa

### Immunogen Information

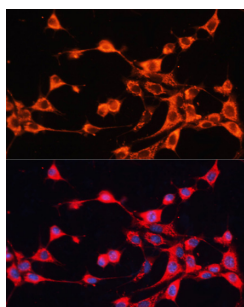
<b>Immunogen</b>	Recombinant fusion protein containing a sequence corresponding to amino acids 230-300 of human ABCB10 (NP_036221.2).
<b>Gene ID</b>	23456
<b>Swiss prot</b>	Q9NRK6
<b>Synonyms</b>	ABCB10; EST20237; M-ABC2; MTABC2; ATP binding cassette subfamily B member 10

### Product information

<b>Source</b>	Rabbit
<b>Isotype</b>	IgG
<b>Purification method</b>	Affinity purification
<b>Storage</b>	Store at -20°C. Avoid freeze / thaw cycles. Buffer: PBS with 0.02% sodium azide, 50% glycerol, pH7.3.

### Background

The membrane-associated protein encoded by this gene is a member of the superfamily of ATP-binding cassette (ABC) transporters. ABC proteins transport various molecules across extra- and intra-cellular membranes. ABC genes are divided into seven distinct subfamilies (ABC1, MDR/TAP, MRP, ALD, OABP, GCN20, White). This protein is a member of the MDR/TAP subfamily. Members of the MDR/TAP subfamily are involved in multidrug resistance. The function of this mitochondrial protein is unknown.

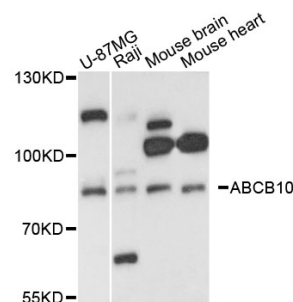


Immunofluorescence - ABCB10 Polyclonal Antibody (A13787)

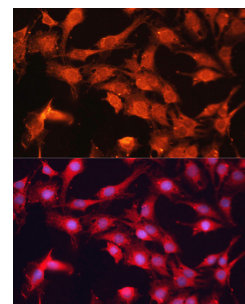
### Recommended Dilutions

WB 1:500 -  
1:2000

IF 1:50 -  
1:200



Western blot - ABCB10 Polyclonal Antibody (A13787)



Immunofluorescence - ABCB10 Polyclonal Antibody (A13787)