

SPDEF Polyclonal Antibody

Catalog No.	A6747	Category	Polyclonal Antibodies
Applications	WB	Observed MW	50kDa
Cross-reactivity	Human, Rat	Calculated MW	35kDa/37kDa

Immunogen Information

Immunogen	Recombinant fusion protein containing a sequence corresponding to amino acids 1-335 of human SPDEF (NP_036523.1).
Gene ID	25803
Swiss prot	O95238
Synonyms	SPDEF; PDEF; bA375E1.3; SAM pointed domain-containing Ets transcription factor

Product information

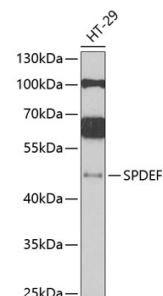
Source	Rabbit
Isotype	IgG
Purification method	Affinity purification
Storage	Store at -20°C. Avoid freeze / thaw cycles. Buffer: PBS with 0.02% sodium azide, 50% glycerol, pH7.3.

Background

The protein encoded by this gene belongs to the ETS family of transcription factors. It is highly expressed in the prostate epithelial cells, and functions as an androgen-independent transactivator of prostate-specific antigen (PSA) promoter. Higher expression of this protein has also been reported in brain, breast, lung and ovarian tumors, compared to the corresponding normal tissues, and it shows better tumor-association than other cancer-associated molecules, making it a more suitable target for developing specific cancer therapies. Alternatively spliced transcript variants encoding different isoforms have been found for this gene.

Recommended Dilutions

WB 1:500 -
1:2000



Western blot - SPDEF Polyclonal Antibody (A6747)