

## KLHL12 Polyclonal Antibody

<b>Catalog No.</b>	A4906	<b>Category</b>	Polyclonal Antibodies
<b>Applications</b>	WB	<b>Observed MW</b>	63kDa
<b>Cross-reactivity</b>	Human, Mouse	<b>Calculated MW</b>	63kDa/67kDa

### Immunogen Information

<b>Immunogen</b>	A synthetic Peptide of human KLHL12
<b>Gene ID</b>	59349
<b>Swiss prot</b>	Q53G59
<b>Synonyms</b>	KLHL12; C3IP1; DKIR; kelch-like protein 12

### Product information

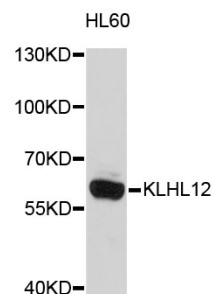
<b>Source</b>	Rabbit
<b>Isotype</b>	IgG
<b>Purification method</b>	Affinity purification
<b>Storage</b>	Store at 4°C. Avoid freeze / thaw cycles. Buffer: PBS with 0.02% sodium azide, pH7.3.

### Background

This gene encodes a member of the KLHL (Kelch-like) family of proteins. This protein has been identified as an autoantigen in the autoimmune disease Sjogren's syndrome and as a potential biomarker in primary biliary cirrhosis. This protein may act as a substrate adaptor of the Cullin-3 ubiquitin ligase complex to promote substrate-specific ubiquitylation. Ubiquitylation by this complex has been shown to regulate the Wnt signaling pathway as well as COPII vesicle coat size. A pseudogene has been identified on chromosome 22. Alternative splicing results in multiple transcript variants.

### Recommended Dilutions

WB 1:500 -  
1:1000



Western blot - KLHL12 Polyclonal Antibody (A4906)