

## MMP14 Polyclonal Antibody

<b>Catalog No.</b>	A2549	<b>Category</b>	Polyclonal Antibodies
<b>Applications</b>	WB, IHC	<b>Observed MW</b>	46-70kDa
<b>Cross-reactivity</b>	Human, Mouse, Rat	<b>Calculated MW</b>	65kDa

### Immunogen Information

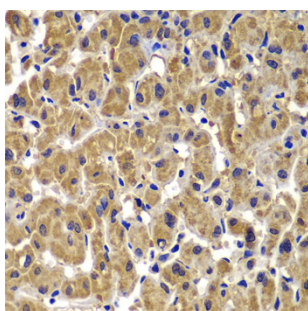
<b>Immunogen</b>	Recombinant protein of human MMP14
<b>Gene ID</b>	4323
<b>Swiss prot</b>	P50281
<b>Synonyms</b>	MMP14; MMP-14; MMP-X1; MT-MMP; MT-MMP 1; MT1-MMP; MT1MMP; MTMMP1; WNCNRS; MT-MMP1; matrix metalloproteinase 14

### Product information

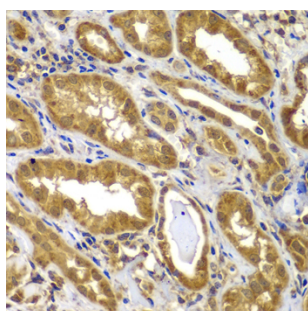
<b>Source</b>	Rabbit
<b>Isotype</b>	IgG
<b>Purification method</b>	Affinity purification
<b>Storage</b>	Store at -20°C. Avoid freeze / thaw cycles. Buffer: PBS with 0.02% sodium azide, 50% glycerol, pH7.3.

### Background

Proteins of the matrix metalloproteinase (MMP) family are involved in the breakdown of extracellular matrix in normal physiological processes, such as embryonic development, reproduction, and tissue remodeling, as well as in disease processes, such as arthritis and metastasis. Most MMP's are secreted as inactive proproteins which are activated when cleaved by extracellular proteinases. However, the protein encoded by this gene is a member of the membrane-type MMP (MT-MMP) subfamily; each member of this subfamily contains a potential transmembrane domain suggesting that these proteins are expressed at the cell surface rather than secreted. This protein activates MMP2 protein, and this activity may be involved in tumor invasion.



Immunohistochemistry - MMP14 Polyclonal Antibody (A2549)

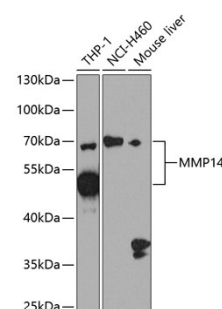


Immunohistochemistry - MMP14 Polyclonal Antibody (A2549)

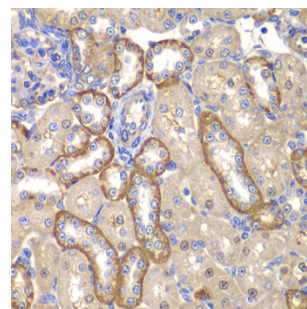
### Recommended Dilutions

WB 1:500 -  
1:2000

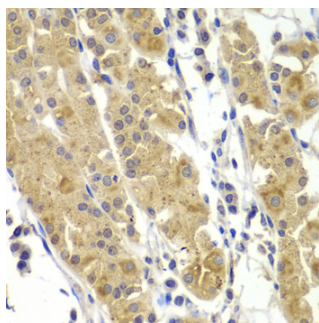
IHC 1:50 -  
1:100



Western blot - MMP14 Polyclonal Antibody (A2549)



Immunohistochemistry - MMP14 Polyclonal Antibody (A2549)



Immunohistochemistry - MMP14  
Polyclonal Antibody (A2549)