

## EFS Polyclonal Antibody

<b>Catalog No.</b>	A16479	<b>Category</b>	Polyclonal Antibodies
<b>Applications</b>	WB	<b>Observed MW</b>	75kDa
<b>Cross-reactivity</b>	Mouse	<b>Calculated MW</b>	40kDa/48kDa/58kDa

### Immunogen Information

<b>Immunogen</b>	Recombinant fusion protein containing a sequence corresponding to amino acids 60-190 of human EFS (NP_115835.1).
<b>Gene ID</b>	10278
<b>Swiss prot</b>	O43281
<b>Synonyms</b>	EFS; CAS3; CASS3; EFS1; EFS2; HEFS; SIN; embryonal Fyn-associated substrate

### Product information

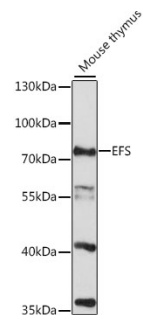
<b>Source</b>	Rabbit
<b>Isotype</b>	IgG
<b>Purification method</b>	Affinity purification
<b>Storage</b>	Store at -20°C. Avoid freeze / thaw cycles. Buffer: PBS with 0.02% sodium azide, 50% glycerol, pH7.3.

### Background

The longest protein isoform encoded by this gene contains an SH3 domain, which is known to be important in intracellular signal transduction. The protein encoded by a similar gene in mice was shown to bind to SH3 domains of protein-tyrosine kinases. The function of this gene is unknown. Three alternatively spliced variants encoding different isoforms have been described for this gene.

### Recommended Dilutions

WB 1:500 -  
1:2000



Western blot - EFS Polyclonal Antibody (A16479)