

BIN1 Polyclonal Antibody

Catalog No.	A1792	Category	Polyclonal Antibodies
Applications	WB, IHC, IF	Observed MW	65kDa
Cross-reactivity	Human, Mouse, Rat	Calculated MW	45-64kDa

Immunogen Information

Immunogen	Recombinant fusion protein containing a sequence corresponding to amino acids 230-409 of human BIN1 (NP_647601.1).
Gene ID	274
Swiss prot	O00499
Synonyms	BIN1; AMPH2; AMPHL; SH3P9; bridging integrator 1

Product information

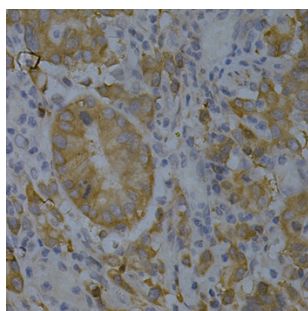
Source	Rabbit
Isotype	IgG
Purification method	Affinity purification
Storage	Store at -20°C. Avoid freeze / thaw cycles. Buffer: PBS with 0.02% sodium azide, 50% glycerol, pH7.3.

Background

This gene encodes several isoforms of a nucleocytoplasmic adaptor protein, one of which was initially identified as a MYC-interacting protein with features of a tumor suppressor. Isoforms that are expressed in the central nervous system may be involved in synaptic vesicle endocytosis and may interact with dynamin, synaptotagmin, endophilin, and clathrin. Isoforms that are expressed in muscle and ubiquitously expressed isoforms localize to the cytoplasm and nucleus and activate a caspase-independent apoptotic process. Studies in mouse suggest that this gene plays an important role in cardiac muscle development. Alternate splicing of the gene results in several transcript variants encoding different isoforms. Aberrant splice variants expressed in tumor cell lines have also been described.



Immunohistochemistry - BIN1
Polyclonal Antibody (A1792)



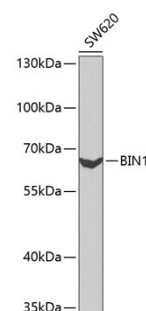
Immunohistochemistry - BIN1
Polyclonal Antibody (A1792)

Recommended Dilutions

WB 1:500 -
1:2000

IHC 1:50 -
1:200

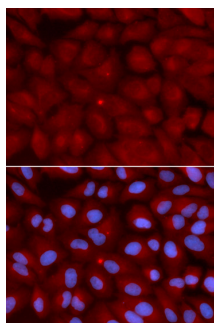
IF 1:20 - 1:50



Western blot - BIN1 Polyclonal
Antibody (A1792)



Immunohistochemistry - BIN1
Polyclonal Antibody (A1792)



Immunofluorescence - BIN1 Polyclonal
Antibody (A1792)