

EIF4E Polyclonal Antibody

Catalog No.	A6085	Category	Polyclonal Antibodies
Applications	WB, IF	Observed MW	25kDa
Cross-reactivity	Human, Mouse, Rat	Calculated MW	25kDa/27kDa/28kDa

Immunogen Information

Immunogen	A synthetic peptide corresponding to a sequence within amino acids 1-100 of human EIF4E (NP_001959.1).
Gene ID	1977
Swiss prot	P06730
Synonyms	EIF4E; AUTS19; CBP; EIF4E1; EIF4EL1; EIF4F; eIF-4E; eukaryotic translation initiation factor 4E

Product information

Source	Rabbit
Isotype	IgG
Purification method	Affinity purification
Storage	Store at -20°C. Avoid freeze / thaw cycles. Buffer: PBS with 0.02% sodium azide, 50% glycerol, pH7.3.

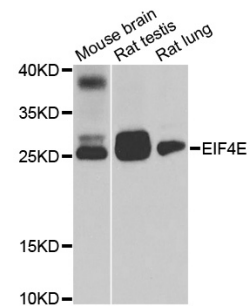
Background

The protein encoded by this gene is a component of the eukaryotic translation initiation factor 4F complex, which recognizes the 7-methylguanosine cap structure at the 5' end of messenger RNAs. The encoded protein aids in translation initiation by recruiting ribosomes to the 5'-cap structure. Association of this protein with the 4F complex is the rate-limiting step in translation initiation. This gene acts as a proto-oncogene, and its expression and activation is associated with transformation and tumorigenesis. Several pseudogenes of this gene are found on other chromosomes. Alternative splicing results in multiple transcript variants.

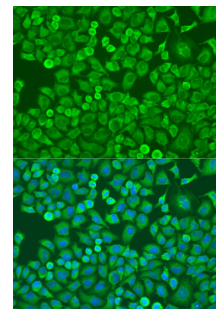
Recommended Dilutions

WB 1:500 -
1:2000

IF 1:50 -
1:200



Western blot - EIF4E Polyclonal Antibody (A6085)



Immunofluorescence - EIF4E Polyclonal Antibody (A6085)