

## SLC23A2 Polyclonal Antibody

<b>Catalog No.</b>	A6740	<b>Category</b>	Polyclonal Antibodies
<b>Applications</b>	WB, IHC, IF	<b>Observed MW</b>	70kDa
<b>Cross-reactivity</b>	Human, Mouse, Rat	<b>Calculated MW</b>	58kDa/70kDa

### Immunogen Information

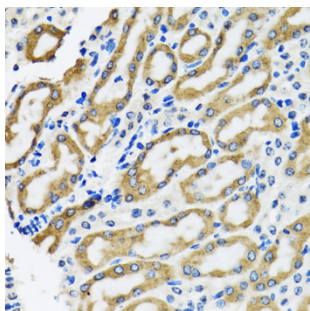
<b>Immunogen</b>	Recombinant fusion protein containing a sequence corresponding to amino acids 1-90 of human SLC23A2 (NP_976072.1).
<b>Gene ID</b>	9962
<b>Swiss prot</b>	Q9UGH3
<b>Synonyms</b>	SLC23A2; NBTL1; SLC23A1; SVCT2; YSPL2; hSVCT2; solute carrier family 23 member 2

### Product information

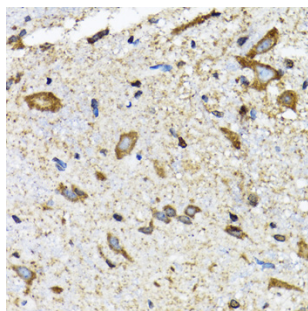
<b>Source</b>	Rabbit
<b>Isotype</b>	IgG
<b>Purification method</b>	Affinity purification
<b>Storage</b>	Store at -20°C. Avoid freeze / thaw cycles. Buffer: PBS with 0.02% sodium azide, 50% glycerol, pH7.3.

### Background

The absorption of vitamin C into the body and its distribution to organs requires two sodium-dependent vitamin C transporters. This gene encodes one of the two required transporters and the encoded protein accounts for tissue-specific uptake of vitamin C. Previously, this gene had an official symbol of SLC23A1.



Immunohistochemistry - SLC23A2 Polyclonal Antibody (A6740)



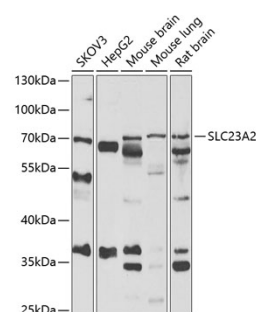
Immunohistochemistry - SLC23A2 Polyclonal Antibody (A6740)

### Recommended Dilutions

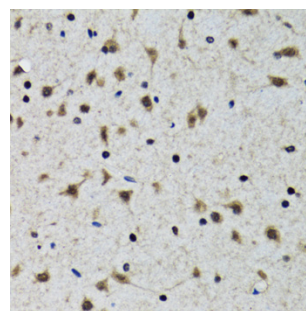
WB 1:500 -  
1:2000

IHC 1:50 -  
1:200

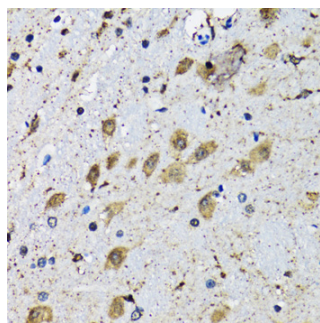
IF 1:10 -  
1:100



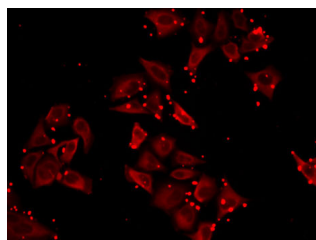
Western blot - SLC23A2 Polyclonal Antibody (A6740)



Immunohistochemistry - SLC23A2 Polyclonal Antibody (A6740)



Immunohistochemistry - SLC23A2  
Polyclonal Antibody (A6740)



Immunofluorescence - SLC23A2  
Polyclonal Antibody (A6740)