

## EPX Polyclonal Antibody

<b>Catalog No.</b>	A16450	<b>Category</b>	Polyclonal Antibodies
<b>Applications</b>	WB	<b>Observed MW</b>	81kDa
<b>Cross-reactivity</b>	Human	<b>Calculated MW</b>	81kDa

### Immunogen Information

<b>Immunogen</b>	A synthetic peptide corresponding to a sequence within amino acids 400-500 of human EPX (NP_000493.1).
<b>Gene ID</b>	8288
<b>Swiss prot</b>	P11678
<b>Synonyms</b>	EPX; EPO; EPP; EPX-PEN; EPXD; eosinophil peroxidase

### Product information

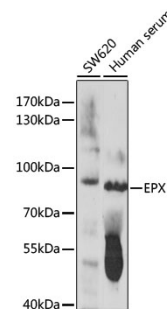
<b>Source</b>	Rabbit
<b>Isotype</b>	IgG
<b>Purification method</b>	Affinity purification
<b>Storage</b>	Store at -20°C. Avoid freeze / thaw cycles. Buffer: PBS with 0.02% sodium azide, 50% glycerol, pH7.3.

### Background

This gene is a member of the peroxidase gene family and is expressed in eosinophils. The encoded preproprotein is proteolytically processed into covalently attached heavy and light chains to form the mature enzyme, which functions as an oxidant. The enzyme is released at sites of parasitic infection or allergen stimulation to mediate lysis of protozoa or parasitic worms. The gene is found in a gene cluster with other peroxidase genes on chromosome 17. Mutations in this gene result in eosinophil peroxidase deficiency.

### Recommended Dilutions

WB 1:500 -  
1:2000



Western blot - EPX Polyclonal Antibody (A16450)