

DNASE1L3 Polyclonal Antibody

Catalog No.	A15608	Category	Polyclonal Antibodies
Applications	WB	Observed MW	31kDa
Cross-reactivity	Mouse	Calculated MW	31kDa/35kDa

Immunogen Information

Immunogen	Recombinant fusion protein containing a sequence corresponding to amino acids 21-281 of human DNASE1L3 (NP_004935.1).
Gene ID	1776
Swiss prot	Q13609
Synonyms	DNASE1L3; DHP2; DNAS1L3; LSD; SLEB16; deoxyribonuclease gamma

Product information

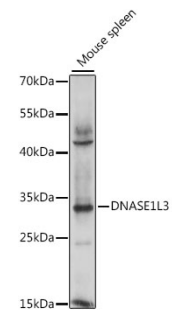
Source	Rabbit
Isotype	IgG
Purification method	Affinity purification
Storage	Store at -20°C. Avoid freeze / thaw cycles. Buffer: PBS with 0.02% sodium azide, 50% glycerol, pH7.3.

Background

This gene encodes a member of the deoxyribonuclease I family. The encoded protein hydrolyzes DNA, is not inhibited by actin, and mediates the breakdown of DNA during apoptosis. Mutations in this gene are a cause of systemic lupus erythematosus-16. Alternatively spliced transcript variants encoding multiple isoforms have been observed for this gene.

Recommended Dilutions

WB 1:500 -
1:2000



Western blot - DNASE1L3 Polyclonal Antibody (A15608)