

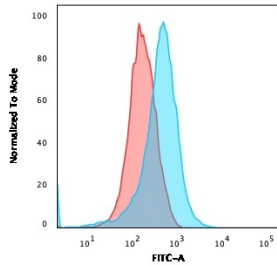
Anti-CD15 Antibody [FR4A5] (A248667)

Specifications:

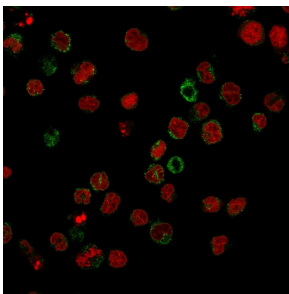
Name:	Anti-CD15 Antibody [FR4A5]
Description:	Mouse monoclonal [FR4A5] antibody to CD15.
Applications:	Flow Cytometry, IF
Recommended Dilutions:	Flow Cytometry: 1-2 µg/million cells, IF: 1-2 µg/ml
Reactivity:	Human
Immunogen:	Myelomonocytic leukemia cells.
Host:	Mouse
Clonality:	Monoclonal
Clone ID:	FR4A5
Isotype:	IgM
Light Chains:	kappa
Conjugate:	Unconjugated
Concentration:	200 µg/ml
Product Form:	Liquid
Formulation:	Supplied in 10mM Phosphate Buffered Saline with 0.05% BSA and 0.05% Sodium Azide.
Storage:	Shipped at 4°C. Upon delivery aliquot and store at -20°C. Avoid freeze / thaw cycles.
General Notes:	This monoclonal antibody is also available in a different formulation without BSA and Sodium Azide - Anti-CD15 Antibody [FR4A5] - BSA and Azide free (A254306).
Disclaimer:	This product is for research use only. It is not intended for diagnostic or therapeutic use.

Anti-CD15 Antibody [FR4A5] (A248667)

Images:



Flow cytometric analysis of U937 cells using Anti-CD15 Antibody [FR4A5] followed by Goat Anti-Mouse IgG (CF® 488) (Blue). Isotype Control (Red).



Immunofluorescent analysis of U937 cells stained with Anti-CD15 Antibody [FR4A5] followed by Goat Anti-Mouse IgG (CF® 488) (Green). Nuclei are stained with RedDot.