

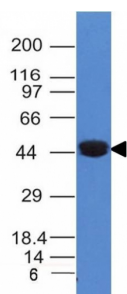
Anti-Cytokeratin 8 Antibody [K8/383] (A249150)

Specifications:

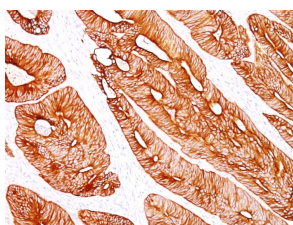
Name:	Anti-Cytokeratin 8 Antibody [K8/383]
Description:	Mouse monoclonal [K8/383] antibody to Cytokeratin 8.
Applications:	Flow Cytometry, IF, IHC-P
Recommended Dilutions:	Flow Cytometry: 1-2 µg/million cells, IF: 1-2 µg/ml, IHC-P: 1-2 µg/ml
Reactivity:	Human
Immunogen:	Recombinant full-length human KRT8 protein.
Host:	Mouse
Clonality:	Monoclonal
Clone ID:	K8/383
Isotype:	IgG1
Light Chains:	kappa
Conjugate:	Unconjugated
Purification:	Protein A/G chromatography.
Concentration:	200 µg/ml
Product Form:	Liquid
Formulation:	Supplied in 10mM Phosphate Buffered Saline with 0.05% BSA and 0.05% Sodium Azide.
Storage:	Shipped at 4°C. Upon delivery aliquot and store at -20°C. Avoid freeze / thaw cycles.
General Notes:	This monoclonal antibody is also available in a different formulation without BSA and Sodium Azide - Anti-Cytokeratin 8 Antibody [K8/383] - BSA and Azide free (A252330).
Disclaimer:	This product is for research use only. It is not intended for diagnostic or therapeutic use.

Anti-Cytokeratin 8 Antibody [K8/383] (A249150)

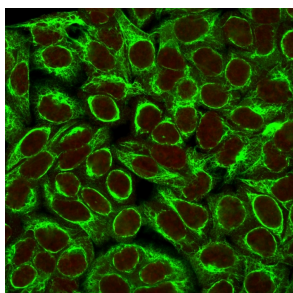
Images:



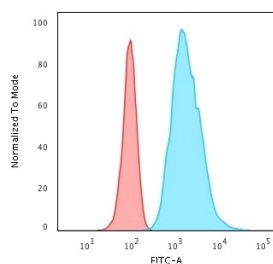
Western blot analysis of A431 cell lysate using Anti-Cytokeratin 8 Antibody [K8/383].



Immunohistochemical analysis of formalin-fixed, paraffin-embedded human colon carcinoma using Anti-Cytokeratin 8 Antibody [K8/383].



Immunofluorescent analysis of HeLa cells stained with Anti-Cytokeratin 8 Antibody [K8/383] (CF® 488) (Green). Nuclear counterstain is RedDot.



Flow cytometric analysis of HeLa cells using Anti-Cytokeratin 8 Antibody [K8/383] followed by Goat Anti-Mouse IgG (CF® 488) (Blue). Isotype Control (Red).