

HPSE Polyclonal Antibody

Catalog No.	A5726	Category	Polyclonal Antibodies
Applications	WB, IF	Observed MW	54-70kDa
Cross-reactivity	Human, Mouse	Calculated MW	42kDa/53kDa/54kDa/61kDa

Immunogen Information

Immunogen	Recombinant fusion protein containing a sequence corresponding to amino acids 36-275 of human HPSE (NP_001092010.1).
Gene ID	10855
Swiss prot	Q9Y251
Synonyms	HPSE; HPA; HPA1; HPR1; HPSE1; HSE1; heparanase

Product information

Source	Rabbit
Isotype	IgG
Purification method	Affinity purification
Storage	Store at -20°C. Avoid freeze / thaw cycles. Buffer: PBS with 0.02% sodium azide, 50% glycerol, pH7.3.

Background

Heparan sulfate proteoglycans are major components of the basement membrane and extracellular matrix. The protein encoded by this gene is an enzyme that cleaves heparan sulfate proteoglycans to permit cell movement through remodeling of the extracellular matrix. In addition, this cleavage can release bioactive molecules from the extracellular matrix. Several transcript variants encoding different isoforms have been found for this gene.

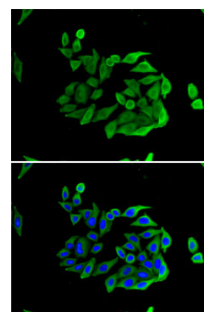
Recommended Dilutions

WB 1:500 -
1:2000

IF 1:10 -
1:100



Western blot - HPSE Polyclonal Antibody (A5726)



Immunofluorescence - HPSE Polyclonal Antibody (A5726)