

ARAF Polyclonal Antibody

| | | | |
|-------------------------|--------------|----------------------|-----------------------|
| Catalog No. | A0180 | Category | Polyclonal Antibodies |
| Applications | WB, IF | Observed MW | 71kDa |
| Cross-reactivity | Human, Mouse | Calculated MW | 20kDa/67kDa |

Immunogen Information

| | |
|-------------------|--|
| Immunogen | Recombinant fusion protein containing a sequence corresponding to amino acids 371-606 of human ARAF (NP_001645.1). |
| Gene ID | 369 |
| Swiss prot | P10398 |
| Synonyms | ARAF; A-RAF; ARAF1; PKS2; RAFA1; serine/threonine-protein kinase A-Raf |

Product information

| | |
|----------------------------|--|
| Source | Rabbit |
| Isotype | IgG |
| Purification method | Affinity purification |
| Storage | Store at -20°C. Avoid freeze / thaw cycles. Buffer: PBS with 0.02% sodium azide, 50% glycerol, pH7.3. |

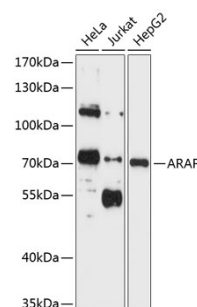
Background

This proto-oncogene belongs to the RAF subfamily of the Ser/Thr protein kinase family, and maybe involved in cell growth and development. Alternatively spliced transcript variants encoding different isoforms have been found for this gene.

Recommended Dilutions

WB 1:500 -
1:1000

IF 1:50 -
1:200



Western blot - ARAF Polyclonal Antibody (A0180)