

[KO Validated] MLKL Polyclonal Antibody

Catalog No.	A13451	Category	Polyclonal Antibodies
Applications	WB, IHC	Observed MW	54kDa
Cross-reactivity	Human, Mouse	Calculated MW	53kDa/54kDa

Immunogen Information

Immunogen	Recombinant protein of mouse MLKL
Gene ID	74568
Swiss prot	
Synonyms	MLKL; hMLKL; mixed lineage kinase domain-like protein

Product information

Source	Rabbit
Isotype	IgG
Purification method	Affinity purification
Storage	Store at -20°C. Avoid freeze / thaw cycles. Buffer: PBS with 0.02% sodium azide, 50% glycerol, pH7.3.

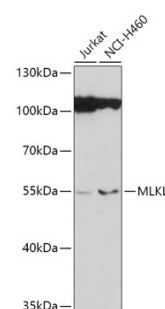
Background

This gene belongs to the protein kinase superfamily. The encoded protein contains a protein kinase-like domain; however, is thought to be inactive because it lacks several residues required for activity. This protein plays a critical role in tumor necrosis factor (TNF)-induced necroptosis, a programmed cell death process, via interaction with receptor-interacting protein 3 (RIP3), which is a key signaling molecule in necroptosis pathway. Inhibitor studies and knockdown of this gene inhibited TNF-induced necrosis. High levels of this protein and RIP3 are associated with inflammatory bowel disease in children. Alternatively spliced transcript variants have been described for this gene.

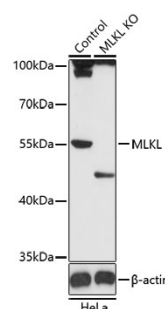
Recommended Dilutions

WB 1:500 -
1:2000

IHC 1:50 -
1:200



Western blot - [KO Validated] MLKL Polyclonal Antibody (A13451)



Western blot - [KO Validated] MLKL Polyclonal Antibody (A13451)