

RPL35 Polyclonal Antibody

Catalog No.	A9043	Category	Polyclonal Antibodies
Applications	WB, IHC	Observed MW	30kDa
Cross-reactivity	Human, Mouse	Calculated MW	14kDa

Immunogen Information

Immunogen	A synthetic Peptide of human RPL35
Gene ID	11224
Swiss prot	P42766
Synonyms	RPL35; L35; ribosomal protein L35

Product information

Source	Rabbit
Isotype	IgG
Purification method	Affinity purification
Storage	Store at 4°C. Avoid freeze / thaw cycles. Buffer: PBS with 0.02% sodium azide, pH7.3.

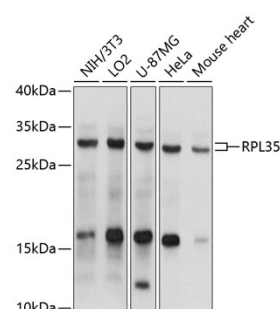
Background

Ribosomes, the organelles that catalyze protein synthesis, consist of a small 40S subunit and a large 60S subunit. Together these subunits are composed of 4 RNA species and approximately 80 structurally distinct proteins. This gene encodes a ribosomal protein that is a component of the 60S subunit. The protein belongs to the L29P family of ribosomal proteins. It is located in the cytoplasm. As is typical for genes encoding ribosomal proteins, there are multiple processed pseudogenes of this gene dispersed through the genome.

Recommended Dilutions

WB 1:500 -
1:1000

IHC 1:20 -
1:50



Western blot - RPL35 Polyclonal Antibody (A9043)