

Anti-XRCC3 Antibody [10F1/6] - BSA and Azide free (A253518)

Specifications:

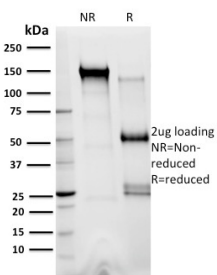
Name:	Anti-XRCC3 Antibody [10F1/6] - BSA and Azide free
Description:	Mouse monoclonal [10F1/6] antibody to XRCC3.
Specificity:	The x-ray repair cross-complementing (XRCC) proteins are responsible for efficiently repairing and maintaining genetic stability following DNA base damage. These genes share sequence similarity with the yeast DNA repair protein Rad51. XRCC1 is a protein that facilitates the DNA base excision repair pathway by interacting with DNA ligase III and DNA polymerase to repair DNA single-strand breaks. XRCC2 and XRCC3 are both involved in maintaining chromosome stability during cell division. XRCC2 is required for efficient repair of DNA double-strand breaks by homologous recombination between sister chromatids, and XRCC3 interacts directly with Rad51 to cooperate with Rad51 during recombinational repair. XRCC4 is an accessory factor of DNA Ligase IV that preferentially binds DNA with nicks or broken ends. XRCC4 binds to DNA Ligase IV and enhances its joining activity, and it is also involved in V(D)J recombination. Any defect in one of the known components of the DNA repair/V(D)J recombination machinery (Ku-70, Ku-80, DNA-PKCS, XRCC4 and DNA Ligase IV) leads to abortion of the V(D)J rearrangement process and early block in both T and B cell maturation.
Applications:	WB, IHC-P
Recommended Dilutions:	WB: 1-2 µg/ml, IHC-P: 1-2 µg/ml
Reactivity:	Human
Immunogen:	Recombinant full-length human XRCC3 protein.
Host:	Mouse
Clonality:	Monoclonal
Clone ID:	10F1/6
Isotype:	IgG1
Light Chains:	kappa
Conjugate:	Unconjugated
Purification:	Protein A/G chromatography.
Concentration:	1 mg/ml
Product Form:	Liquid
Formulation:	Supplied in 10mM Phosphate Buffered Saline; without Sodium Azide and carrier free.

Anti-XRCC3 Antibody [10F1/6] - BSA and Azide free (A253518)

Specifications continued:

Storage:	Shipped at 4°C. Upon delivery aliquot and store at -20°C. Avoid freeze / thaw cycles.
General Notes:	This monoclonal antibody is also available in a different formulation with BSA and Sodium Azide - Anti-XRCC3 Antibody [10F1/6] (A250338).
Disclaimer:	This product is for research use only. It is not intended for diagnostic or therapeutic use.

Images:



SDS-PAGE analysis of Anti-XRCC3 Antibody [10F1/6] under non-reduced and reduced conditions; showing intact IgG and intact heavy and light chains, respectively. SDS-PAGE analysis confirms the integrity and purity of the antibody.