

SMYD3 Polyclonal Antibody

Catalog No.	A14516	Category	Polyclonal Antibodies
Applications	WB	Observed MW	49kDa
Cross-reactivity	Human, Mouse	Calculated MW	29kDa/42kDa/49kDa

Immunogen Information

Immunogen	A synthetic peptide corresponding to a sequence within amino acids 50-150 of human SMYD3 (NP_001161212.1).
Gene ID	64754
Swiss prot	Q9H7B4
Synonyms	SMYD3; KMT3E; ZMYND1; ZNFN3A1; bA74P14.1; SET and MYND domain containing 3

Product information

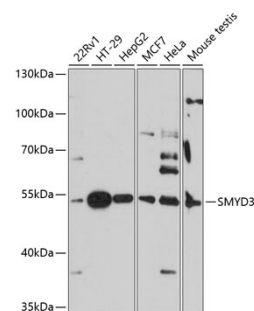
Source	Rabbit
Isotype	IgG
Purification method	Affinity purification
Storage	Store at -20°C. Avoid freeze / thaw cycles. Buffer: PBS with 0.02% sodium azide, 50% glycerol, pH7.3.

Background

This gene encodes a histone methyltransferase which functions in RNA polymerase II complexes by an interaction with a specific RNA helicase. Multiple transcript variants encoding different isoforms have been found for this gene.

Recommended Dilutions

WB 1:500 -
1:2000



Western blot - SMYD3 Polyclonal Antibody (A14516)