

## COL17A1 Monoclonal Antibody

<b>Catalog No.</b>	A10823	<b>Category</b>	Monoclonal Antibodies
<b>Applications</b>	WB, IHC, IF, IP	<b>Observed MW</b>	Refer to figures
<b>Cross-reactivity</b>	Human, Mouse, Rat	<b>Calculated MW</b>	142kDa/150kDa

### Immunogen Information

<b>Immunogen</b>	Recombinant protein of human COL17A1
<b>Gene ID</b>	1308
<b>Swiss prot</b>	Q9UMD9
<b>Synonyms</b>	COL17A1; BA16H23.2; BP180; BPA-2; BPAG2; ERED; LAD-1; EBR2A; JEB-I; collagen alpha-1(XVII) c hain

### Product information

<b>Source</b>	Rabbit
<b>Isotype</b>	IgG
<b>Purification method</b>	Affinity purification
<b>Storage</b>	Store at -20°C. Avoid freeze / thaw cycles. Buffer: PBS with 0.02% sodium azide, 50% glycerol, pH7.3.

### Background

This gene encodes the alpha chain of type XVII collagen. Unlike most collagens, collagen XVII is a transmembrane protein. Collagen XVII is a structural component of hemidesmosomes, multiprotein complexes at the dermal-epidermal basement membrane zone that mediate adhesion of keratinocytes to the underlying membrane. Mutations in this gene are associated with both generalized atrophic benign and junctional epidermolysis bullosa. Two homotrimeric forms of type XVII collagen exist. The full length form is the transmembrane protein. A soluble form, referred to as either ectodomain or LAD-1, is generated by proteolytic processing of the full length form.

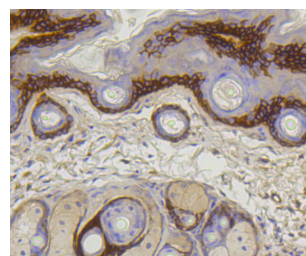
### Recommended Dilutions

WB 1:500 -  
1:2000

IHC 1:50 -  
1:200

IF 1:50 -  
1:200

IP 1:20 - 1:50



Immunohistochemistry - COL17A1 Monoclonal Antibody (A10823)



Immunofluorescence - COL17A1 Monoclonal Antibody (A10823)