

## CPM Polyclonal Antibody

<b>Catalog No.</b>	A6565	<b>Category</b>	Polyclonal Antibodies
<b>Applications</b>	WB, IHC	<b>Observed MW</b>	62kDa
<b>Cross-reactivity</b>	Human	<b>Calculated MW</b>	50kDa

### Immunogen Information

**Immunogen** Recombinant fusion protein containing a sequence corresponding to amino acids 204-443 of human CPM (NP\_001005502.1).

**Gene ID** 1368

**Swiss prot** P14384

**Synonyms** CPM; carboxypeptidase M

### Product information

**Source** Rabbit

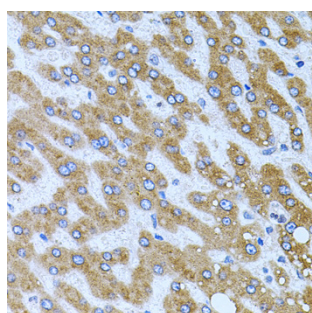
**Isotype** IgG

**Purification method** Affinity purification

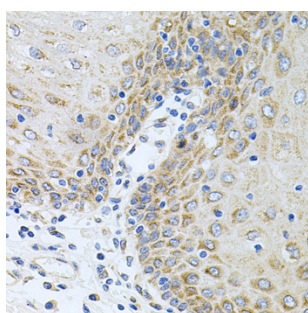
**Storage** Store at -20°C. Avoid freeze / thaw cycles.  
Buffer: PBS with 0.02% sodium azide, 50% glycerol, pH7.3.

### Background

The protein encoded by this gene is a membrane-bound arginine/lysine carboxypeptidase. Its expression is associated with monocyte to macrophage differentiation. This encoded protein contains hydrophobic regions at the amino and carboxy termini and has 6 potential asparagine-linked glycosylation sites. The active site residues of carboxypeptidases A and B are conserved in this protein. Three alternatively spliced transcript variants encoding the same protein have been described for this gene.



Immunohistochemistry - CPM Polyclonal Antibody (A6565)

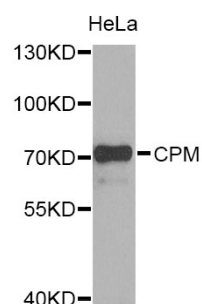


Immunohistochemistry - CPM Polyclonal Antibody (A6565)

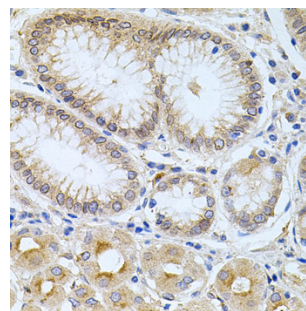
### Recommended Dilutions

WB 1:500 -  
1:2000

IHC 1:50 -  
1:100



Western blot - CPM Polyclonal Antibody (A6565)



Immunohistochemistry - CPM Polyclonal Antibody (A6565)